

Collect a USB Drive!

Open the Readme

Imagr

@grahamgilbert



Some Say...



Imaging is Dead

I am not dead yet!

Everyone got the files?

Everyone got an OS X
Installer?

Everyone got VMware?

Agenda

Long boring prep work

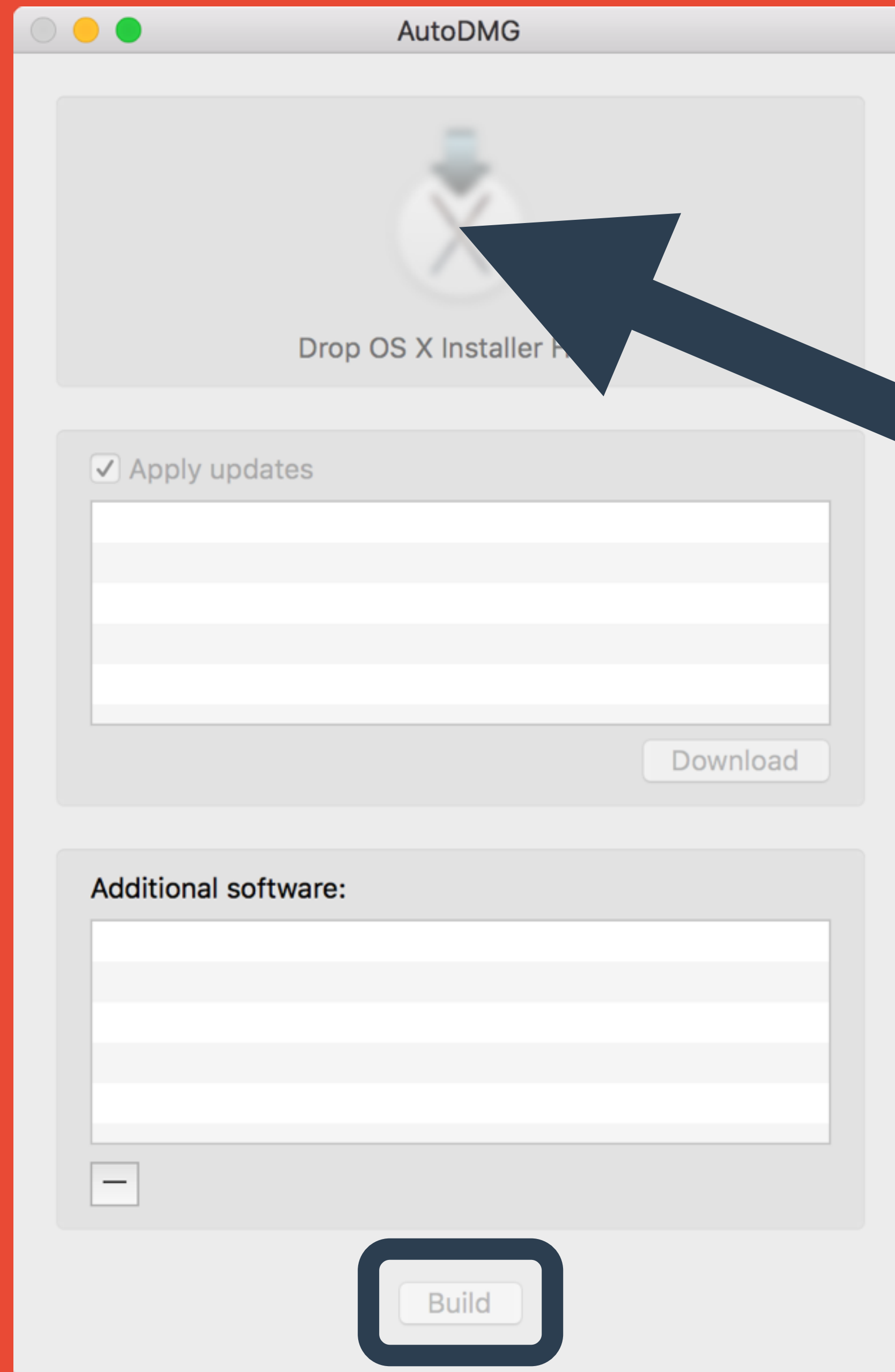
Background tasks will be here

Autodmg

Never booted image

Never booted image
(Stupid easy)





Text Editor

AutoDMG Building

Copy everything to your
home directory

AutoDMG Building

Install docker toolbox

AutoDMG Building


```
$ cd somewhere/Imagr_Lab  
$ sh Scripts/machine.sh
```

```
$ docker-machine env vmwaredocker  
$ eval "$$(docker-machine env vmwaredocker)"
```

```
$ cd somewhere/Imagr_Lab  
$ sh Scripts/import.sh
```


What is Imagr?

AutoDMG Building

Open Source Imaging tool

AutoDMG Building

Uses a simple Web server

AutoDMG Building

No OS X Server Required

AutoDMG Building

No OS X “Server”
Required

AutoDMG Building



Can replace DS for most
people

AutoDMG Building

Growing community

AutoDMG Building

Uses a Plist

scripts/genpassword.sh

Change yourpasswordhere

```
$ cd somewhere/Imagr_Lab  
$ sh Scripts/genpassword.sh
```


Data/web_root/

Imagr_config.plist

imagr_config.plist

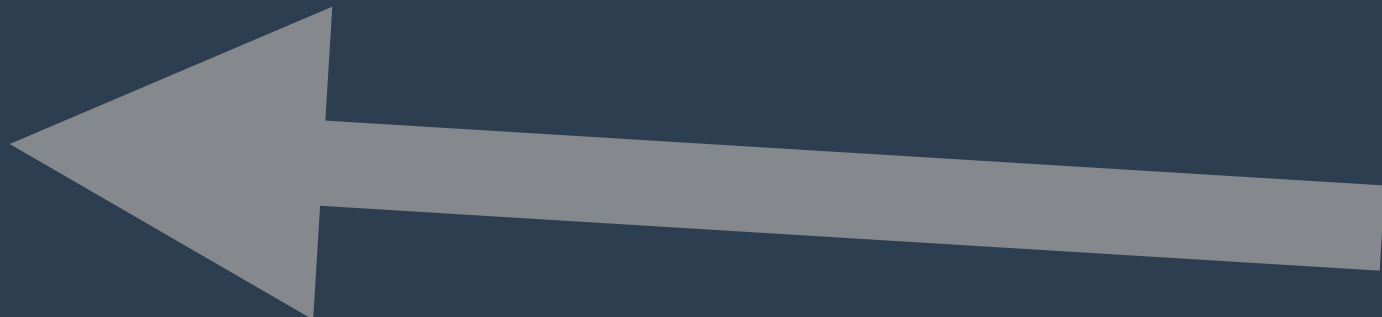
Workflows

Components

Back to `imagr_config.plist`

```
<?xml version="1.0" encoding="UTF-8"?>
<!DOCTYPE plist PUBLIC "-//Apple//DTD PLIST 1.0//EN" "http://www.apple.com/DTDs/PropertyList-1.0.dtd">
<plist version="1.0">
<dict>
  <key>password</key>
<string>b109f3bbbc244eb82441917ed06d618b9008dd09b3befd1b5e07394c706a8bb980b1d7785e5976ec049b4</string>
  <key>workflows</key>
  <array>
    <dict>
      <key>name</key>
      <string>MacTech Workflow</string>
      <key>description</key>
      <string>A demo workflow made in the Imagr Lab session.</string>
      <key>components</key>
      <array>

      </array>
    </dict>
  </array>
</dict>
</plist>
```




```
<dict>
  <key>type</key>
  <string>image</string>
  <key>url</key>
  <string>http://YOURIPADDRESSHERE/your-autodmg-image-name.hfs.dmg</string>
</dict>
```

```
<dict>
  <key>type</key>
  <string>package</string>
  <key>url</key>
  <string>http://YOURIPADDRESSHERE/packages/clearReg.pkg</string>
  <key>first_boot</key>
  <false/>
</dict>
<dict>
  <key>type</key>
  <string>package</string>
  <key>url</key>
  <string>http://YOURIPADDRESSHERE/packages/adminUser.pkg</string>
</dict>
```

```
<dict>  
  <key>type</key>  
  <string>computer_name</string>  
</dict>
```

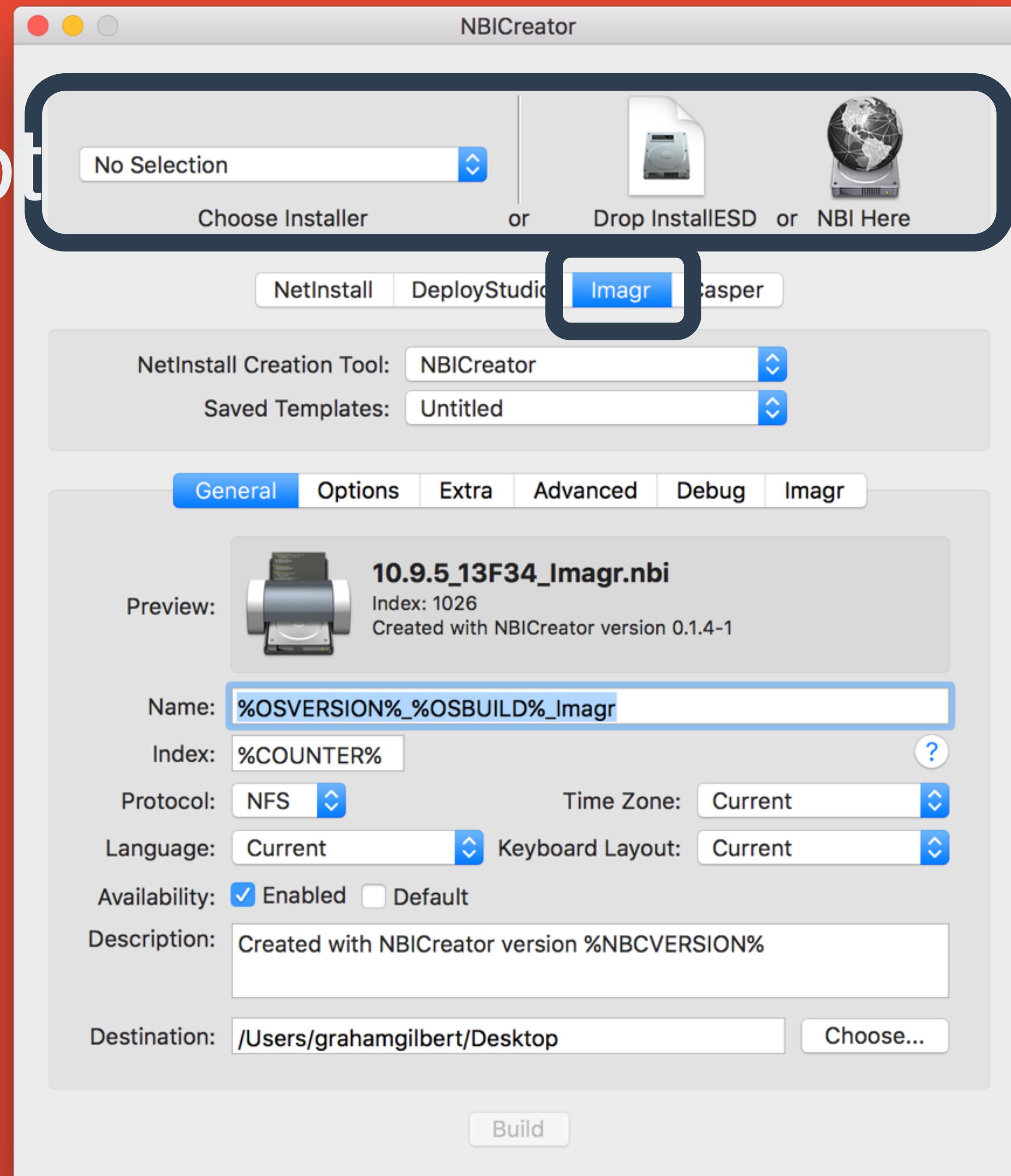
```
<dict>
  <key>type</key>
  <string>script</string>
  <key>content</key>
  <string>#!/bin/bash
/usr/bin/csrutil netboot add 10.10.10.10
/usr/bin/csrutil netboot add 10.10.10.11
</string>
  <key>first_boot</key>
  <false/>
</dict>
<dict>
  <key>type</key>
  <string>script</string>
  <key>content</key>
  <string>#!/bin/bash
/usr/sbin/systemsetup -f -setremotelogin on</string>
</dict>
```

That's it!

Has AutoDMG Finished?


The NBI

Data/web_root





NBICreator



Mac OS X 10.11 (15A284)

Source: NetInstall Image
Name: 10.11_15A284_Imagr.nbi

NetInstall

DeployStudio

Imagr

Casper

NetInstall Creation Tool:

NBICreator

Saved Templates:

10.11_15A284_Imagr

General

Options

Extra

Advanced

Debug

Imagr

Imagr Version:

0.0.4

Configuration URL:

http://YOURIPADDRESSHERE/imagr_config.plist

Reporting URL:

(Optional)

Syslog Server URI:


(Optional)

To create a NetInstall Image you need to upgrade the helper.

Upgrade Helper

Build

NBICreator



Mac OS X 10.11 (15A284)

Source: NetInstall Image
Name: 10.11_15A284_Imagr.nbi

NetInstall

DeployStudio

Imagr

Casper

NetInstall Creation Tool:

NBICreator

Saved Templates:

10.11_15A284_Imagr

General

Options

Extra

Advanced

Debug

Imagr

Imagr Version:

0.0.4

Configuration URL:

http://YOURIPADDRESSHERE/imagr_config.plist

Reporting URL:


(Optional)

Syslog Server URI:

(Optional)

Build

NBICreator



Unsaved Settings!

You have unsaved settings, do you want to save current template and continue?

Cancel

Continue

Save and Continue

NetInstall

DeployStudio

Imagr

Casper

NetInstall Creation Tool:

NBICreator

Saved Templates:

10.11_15A284_Imagr

General

Options

Extra

Advanced

Debug

Imagr

Imagr Version:

0.0.4

Configuration URL:

http://192.168.6.167/imagr_config.plist

Reporting URL:

(Optional)

Syslog Server URI:

(Optional)

Build

Copy AutoDMG image to
data/web_root

Docker

```
$ cd somewhere/Imagr_Lab  
$ sh Scripts/start-docker.sh
```

```
$ docker logs bsdpy
```

Time to netboot

Select the Installation Method



Install from disc or image



Import an existing PC



Install OS X from the recovery partition



Import an existing virtual machine



Install from Boot Camp



Create a custom virtual machine



Create a virtual machine on a remote server



Cancel

Continue

Select the Installation Method



Install from disc or image



Import an existing PC



Install OS X from the recovery partition



Import an existing virtual machine



Install from Boot Camp



Create a custom virtual machine



Create a virtual machine on a remote server



Cancel

Continue

Choose Operating System

Select the operating system to be used in this virtual machine.

Select the operating system for this virtual machine:

Microsoft Windows	▶ OS X 10.11
Apple OS X	▶ OS X 10.10
Linux	▶ OS X 10.9
Novell NetWare	▶ OS X 10.8
Solaris	▶ Mac OS X 10.7
VMware ESX	▶ Mac OS X 10.7 32-bit
Other	▶ Mac OS X Server 10.6
	Mac OS X Server 10.6 32-bit
	Mac OS X Server 10.5
	Mac OS X Server 10.5 32-bit



Cancel

Go Back

Continue

Choose a Virtual Disk

Select a virtual disk to be used with this virtual machine.

Choose a virtual disk option:

- ☒ Create a new virtual disk
☐ Use an existing virtual disk

Choose virtual disk...

Guest OS: OS X 10.11

Option: New Hard Disk

Capacity: 40 GB



Cancel

Go Back

Continue

Finish

The configuration of the virtual machine is now complete.

Virtual Machine Summary

Guest Operating System OS X 10.11

New Hard Disk Capacity 40 GB

Memory 2 GB

Networking Share with my Mac (NAT)

Device Summary 2 CPU cores, CD/DVD, USB Controller,
Sound Card

To change the default virtual machine settings, click Customize Settings. To run the virtual machine now, click Finish.

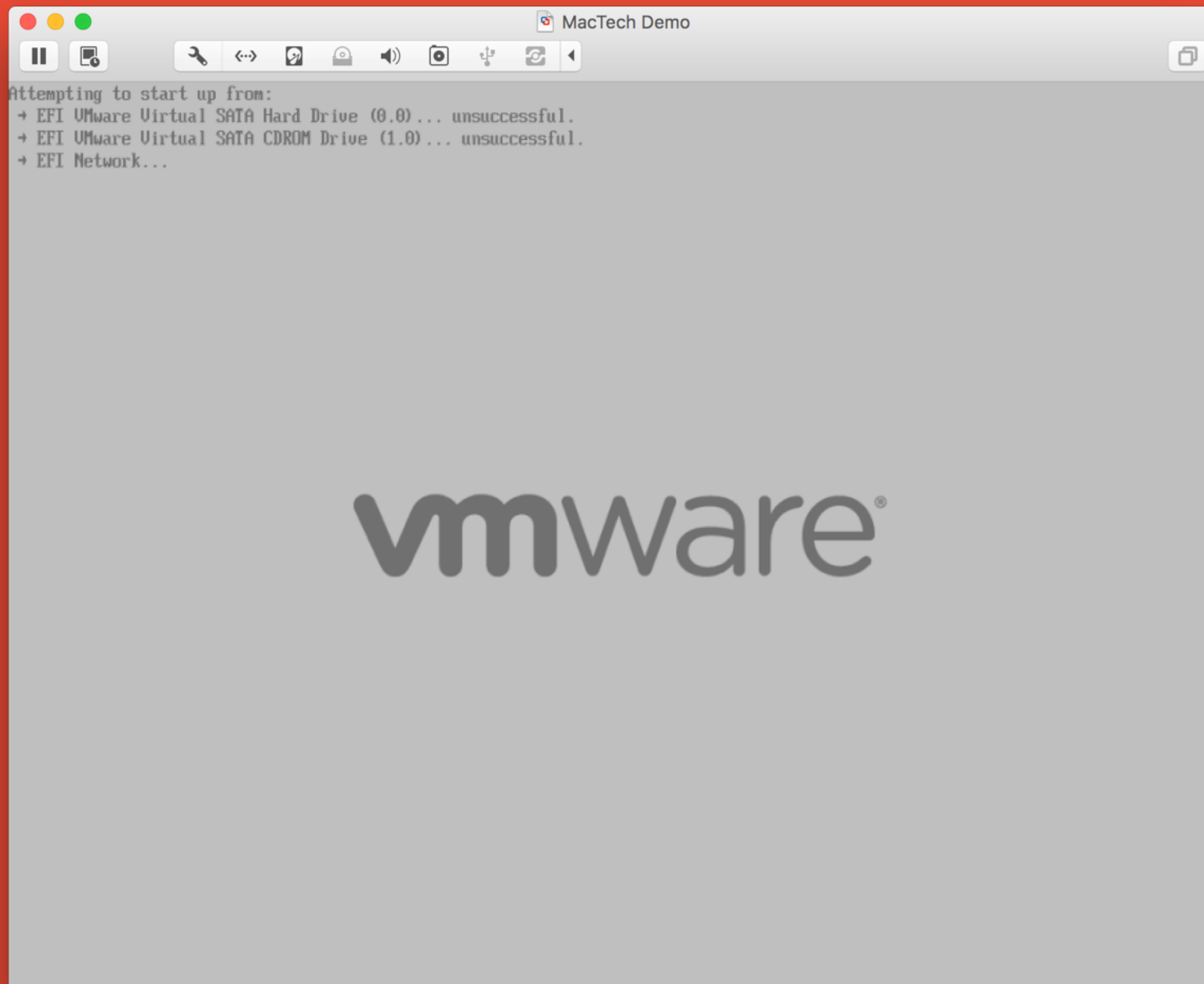
Customize Settings

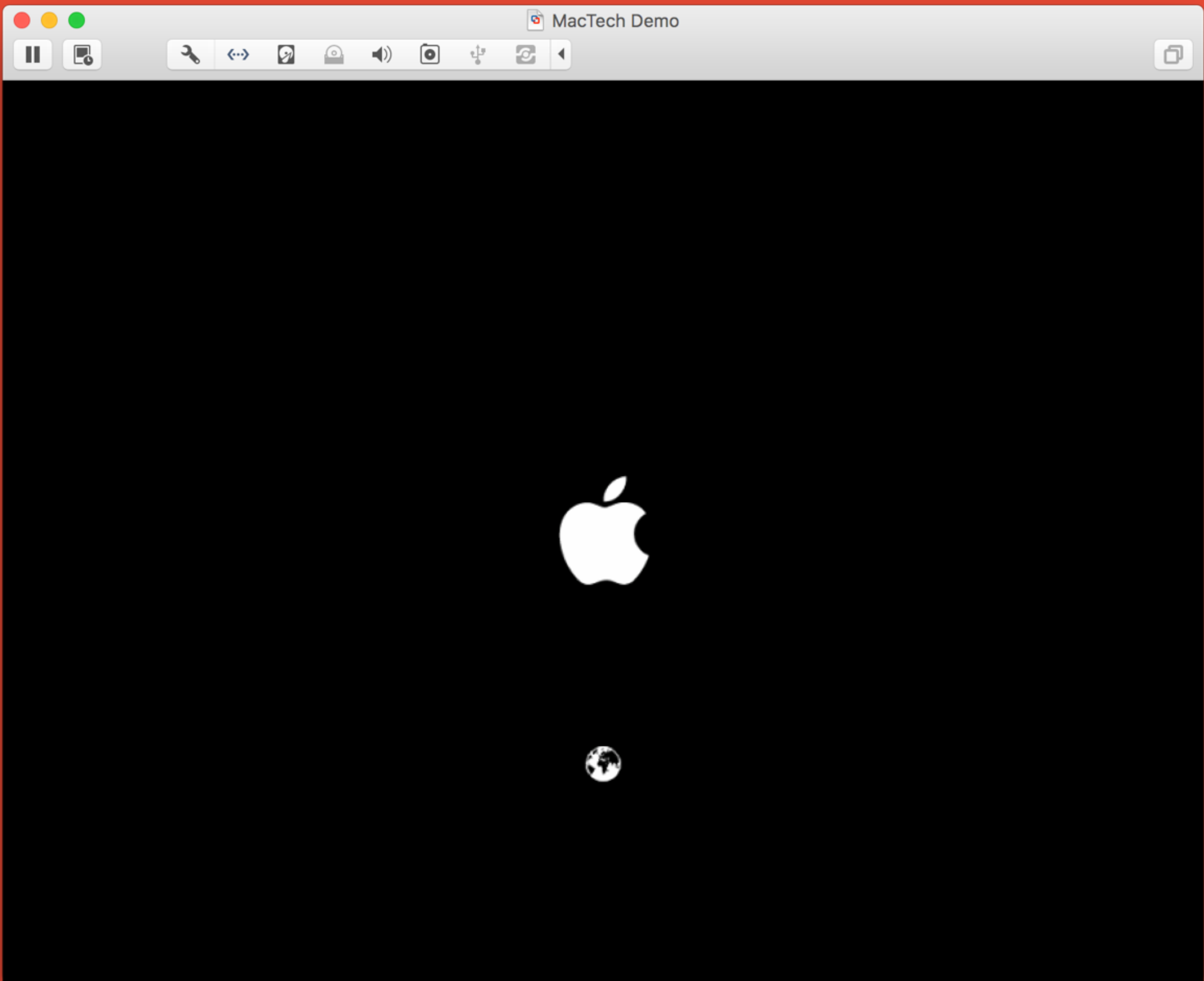


Cancel

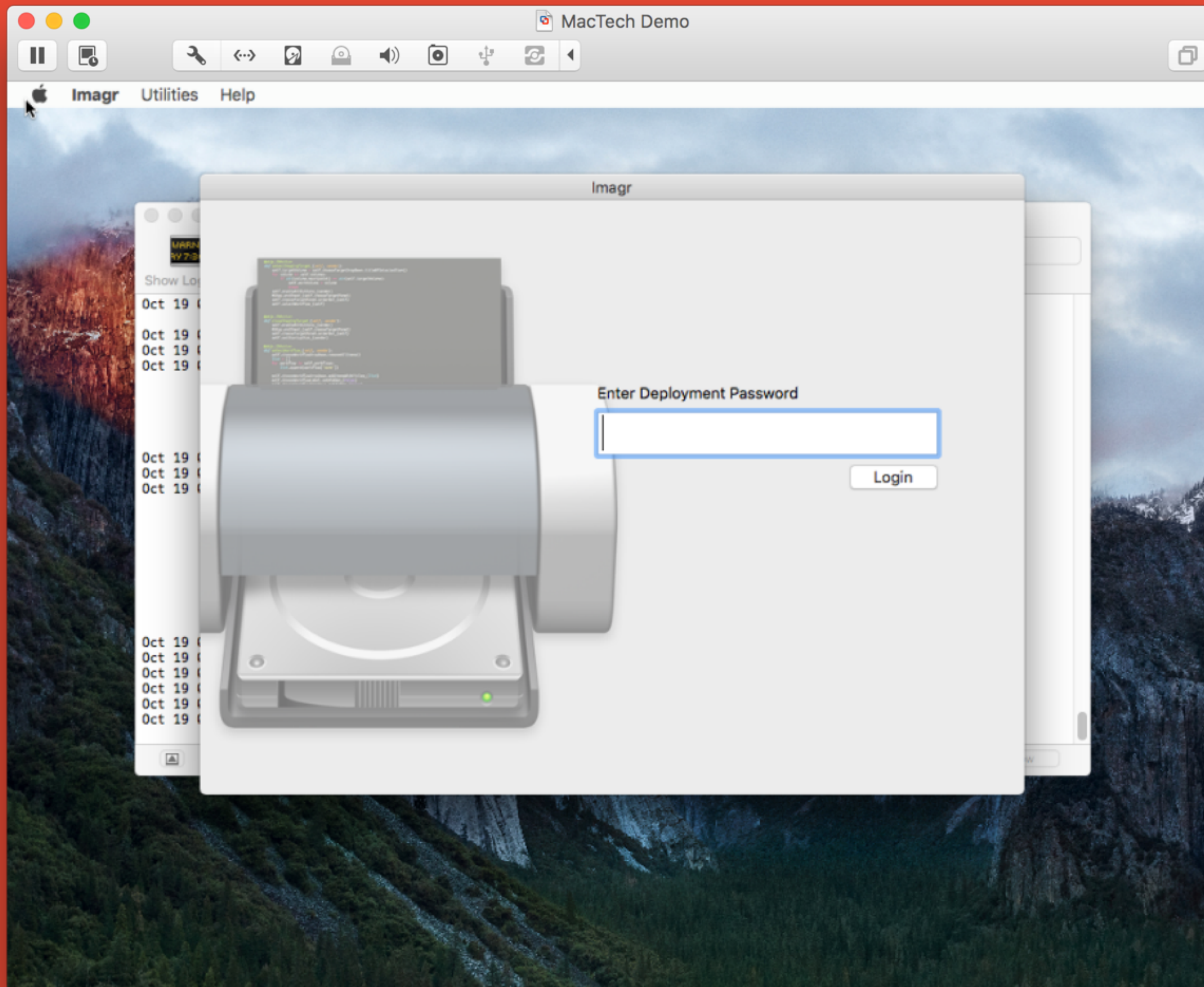
Go Back

Finish





```
$ docker logs bsdpy
```


```
$ cd somewhere/Imagr_Lab  
$ sh Scripts/stop-machine.sh
```

Questions?

github.com/grahamgilbert/
imagr
grahamgilbert.com