

The Professional Apple Tech's Toolbox

Allen Hancock
Founder, Watchman Monitoring
Consultant, Rooted Consulting



Allen Hancock

Allen Hancock received his Bachelor's in Early Childhood Education at the University of Missouri - Columbia. In 2000, Allen started the Mac Consulting Group, Inc: an Apple Specialist and Authorized Training Center based in Baton Rouge, Louisiana. There, he found his thrill in helping clients make the most of their computing experiences.

Over the course of his career, he met too many people as they suffered a failing hard drive without a current backup. As a means of preventing such loss, Allen founded Watchman Monitoring, Inc. Its namesake product is a Software as a Service tool which allows service providers to address such problems before it's too late.



Useful Tools for my consulting life.



Man, oh man



- ManOpen
 - Free install
 - Command-O to Open
 - Command-Shift-A to “apropos”



LiteSwitch



- Most know Command-Tab
 - Fun to teach, eh?
 - LiteSwitch brings just one window forward
 - Your mac will never be the same
- Pwn your tab key
 - <http://www.mactech.com/articles/mactech/Vol.23/23.02/PwnYourTabKey/index.html>



TextWrangler



Feature	Benefit
It's free	One less thing to sell
Opens anything	View details like line endings
Process lines containing	isolate or delete excess info
Multi-File Search/Find All	Shows many instances
Opens binary plists	No need to convert

<http://barebones.com/products/bbedit/comparison.html>

<http://barebones.com/products/textwrangler/benefits.html>



GraphicConverter



- If it's an image, you can open it.
- If you can open it, you can convert it.
- Batch Convert? Yes please.



Wrangling CSVs



- Handles line breaks with ease
- Split columns on a space, or any other character
- Rearrange columns as needed
- Great developer support
(feature requests added, bugs fixed)



Space Commands

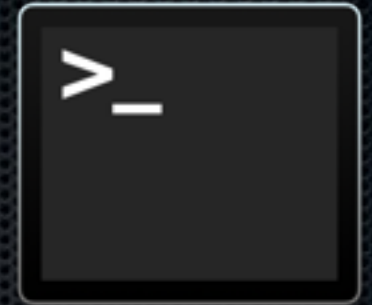
- df - display free space
- du - display disk usage statistics
 - -h (human readable)
 - -d # (depth)
 - -c (grand total)

du -h -d 1 -c ~ - get your home directory stats

```
11G /Users/user/Desktop
10G /Users/user/Documents
3.1G /Users/user/Downloads
1.4G /Users/user/Dropbox
11G /Users/user/Library
0B /Users/user/Movies
99G /Users/user/Music
8.4G /Users/user/Pictures
144G /Users/user
144G total
```



Got Root?

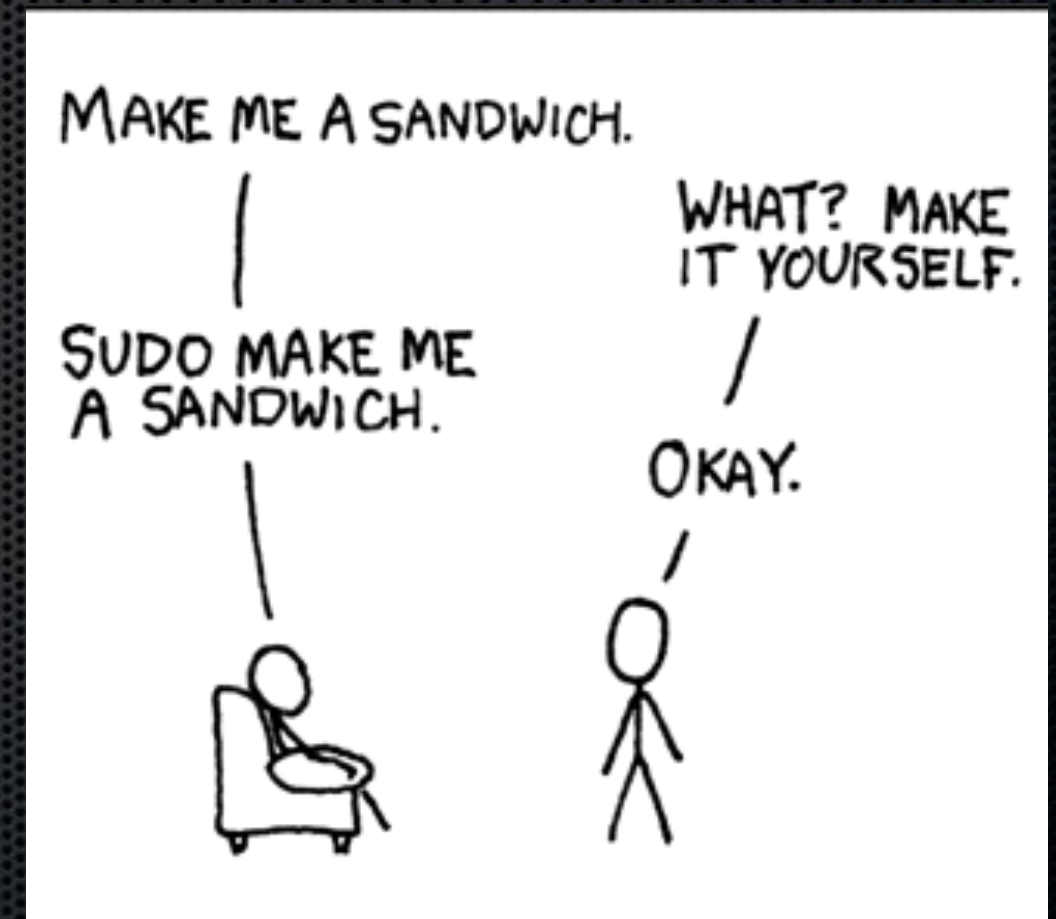


sudo allows great power from the normal user-space.

The *sudo* Terminal command can be used by administrators to execute commands as root.

sudo command requires a non-blank admin password .

[[HT202035](#)]



Root without root

- Run an app with root permissions using sudo -s
Allows great power from the normal user-space
- Use #! Which process is that?
- Use Activity Monitor to see what that random “java” app is.

/Applications/Utilities/Activity\ Monitor.app/Contents/MacOS/Activity\ Monitor

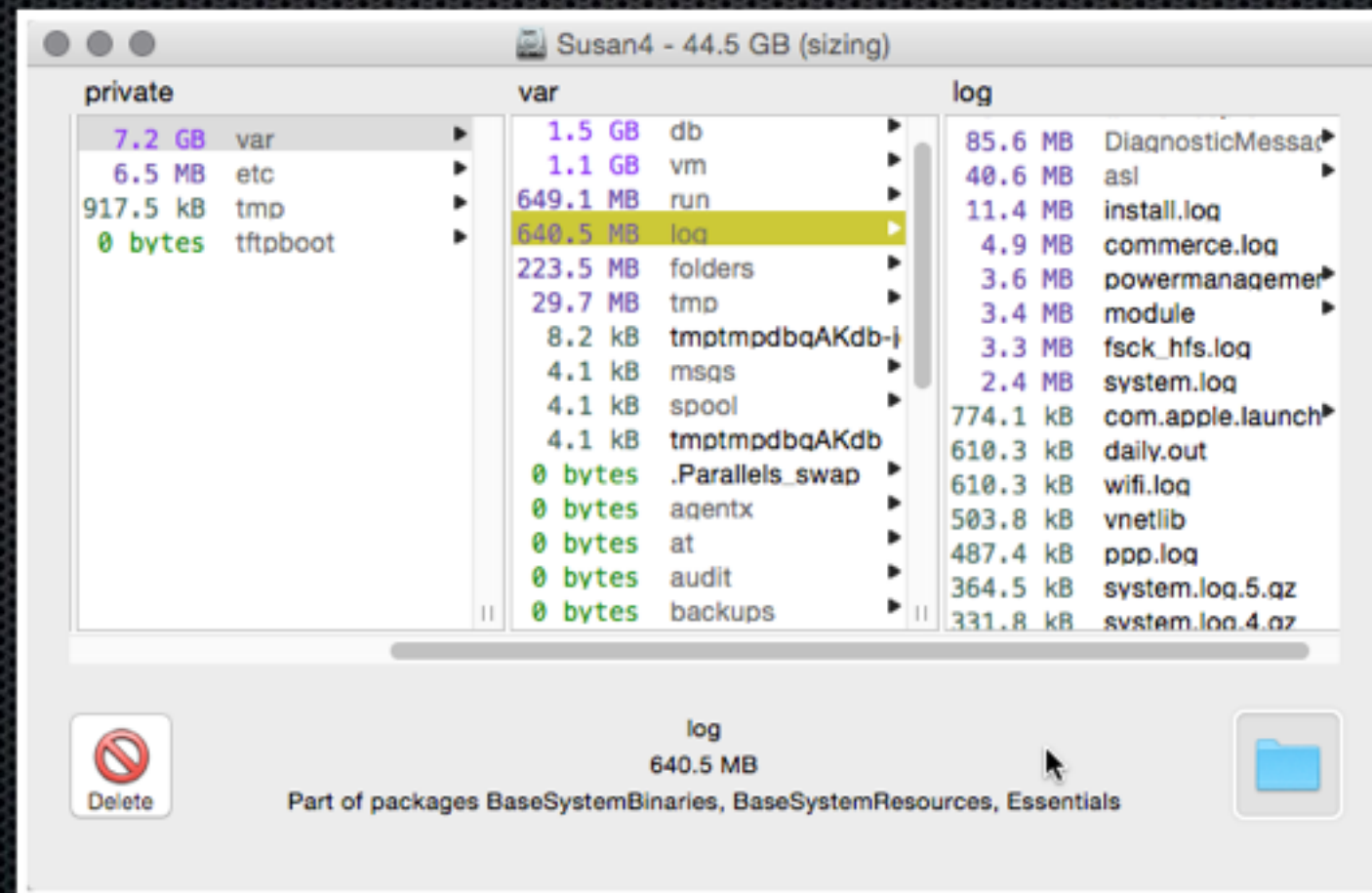
- Find the process in question and Get Info to see what files it's using.



Out of Space?



- OmniDiskSweeper
 - `sudo /path/to/OmniDiskSweeper.app/Contents/MacOS/OmniDiskSweeper`
 - Command `.` to quit the app.



Packages, demystified



- Pacifist
 - Just what's in the package?
 - What are the scripts going to do before, or after?
- Suspicious Package Quick Look Plugin
 - Select any installer package in the Finder, and choose Quick Look from the File menu — or just press the spacebar.
 - Suspicious Package will examine the package, and show a preview in the Quick Look window.



Packaging, demystified



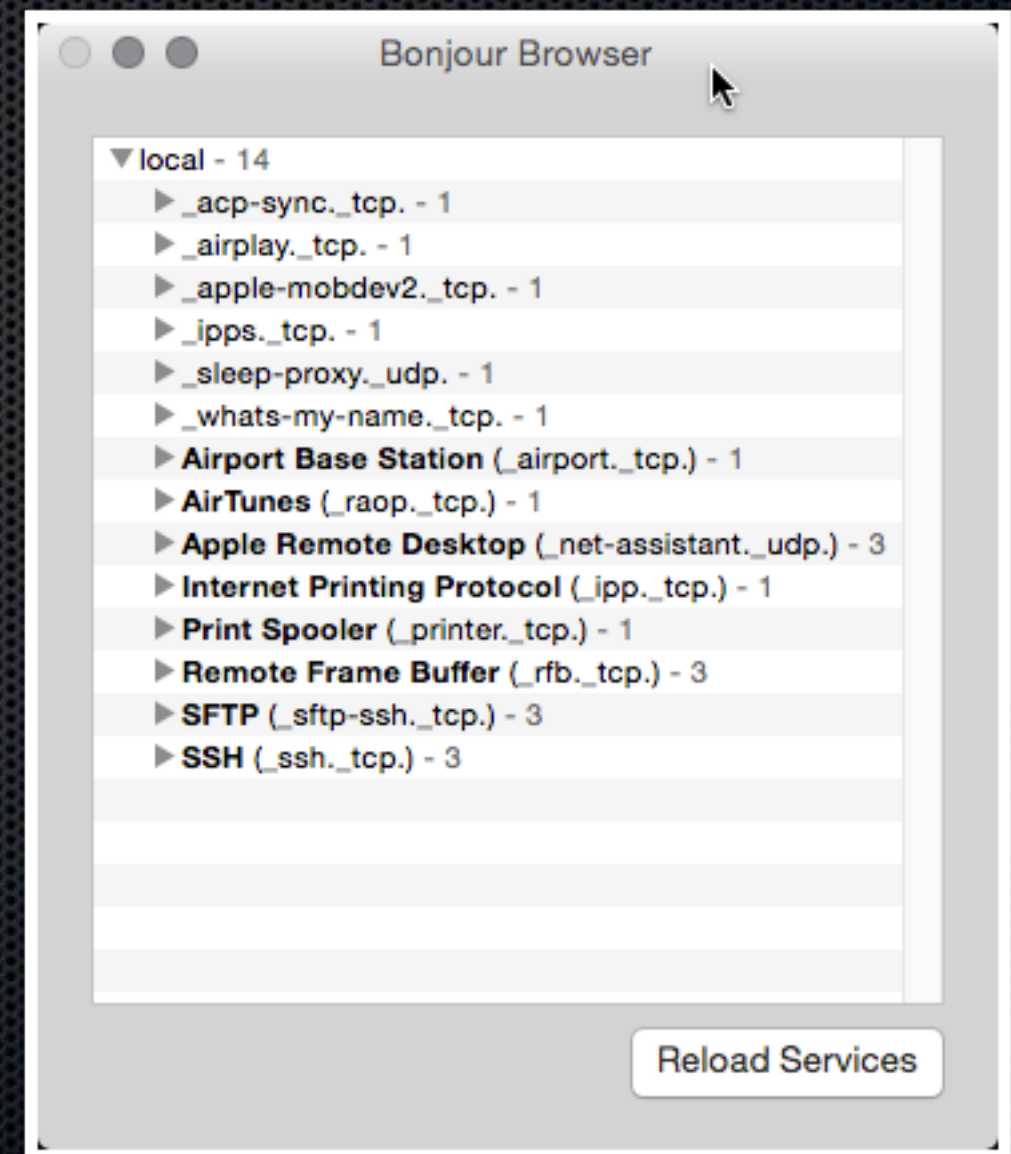
- Packages
 - “Just make a package”..yeah right. Right!
 - Learn by example feature
 - Put files where they need to be, permissions included
 - Let your end-users run scripts with a pkg



Hello, Who's on my LAN?



- Bonjour Browser
 - Effortlessly discovers Macs and recent printers on your LAN.
 - Displays great information for locating devices.
 - Bring your copy & paste!



Hello, Who's on my LAN?



- Ping the Broadcast Address for all devices to respond
 - `ping 255.255.255.255`
 - Use `arp -a` for a list of all discovered devices
 - The result is a list of IP and MAC addresses
 - lookup the MAC address vendor code on the IEEE list

```
$ arp -a
? (10.0.1.1) at 70:56:81:c6:6a:5d on en1 ifscope [ethernet]
? (10.0.1.7) at 58:55:ca:f1:57:c1 on en1 ifscope [ethernet]
```

www.coffer.com translates 70-56-81 (hex) to “Apple”



Hey, where's my stuff?



- EasyFind
 - It's fast!
 - Finds anywhere on the filesystem, even inside files
 - So much control you'd think it was Sherlock
- FoxTrot
 - Indexes data for fast, up to date results
 - Search a network share? OK
 - SMB, NAS, OS X Server
 - Pro Versions can keep a running current index



Stream Watching

tcpflow

- What's the benefit? Follow along:
- Download TCPFlow - Rudix
- Figure out which network-interface has the interesting traffic (en0, etc)
- Follow one of these examples:
 - `sudo /usr/local/bin/tcpflow -c -i en0 host 10.0.1.1`
- Watches all traffic to 10.0.1.1
 - `sudo /usr/local/bin/tcpflow -c -i en1 tcp port 80`
- Watches all traffic on port 80
- This is especially handy when troubleshooting smtp process, or directory server setup (before enabling ssl)
- Learn more at: office.mvps.org/troubleshoot/tcpflow.html



Masked addresses?



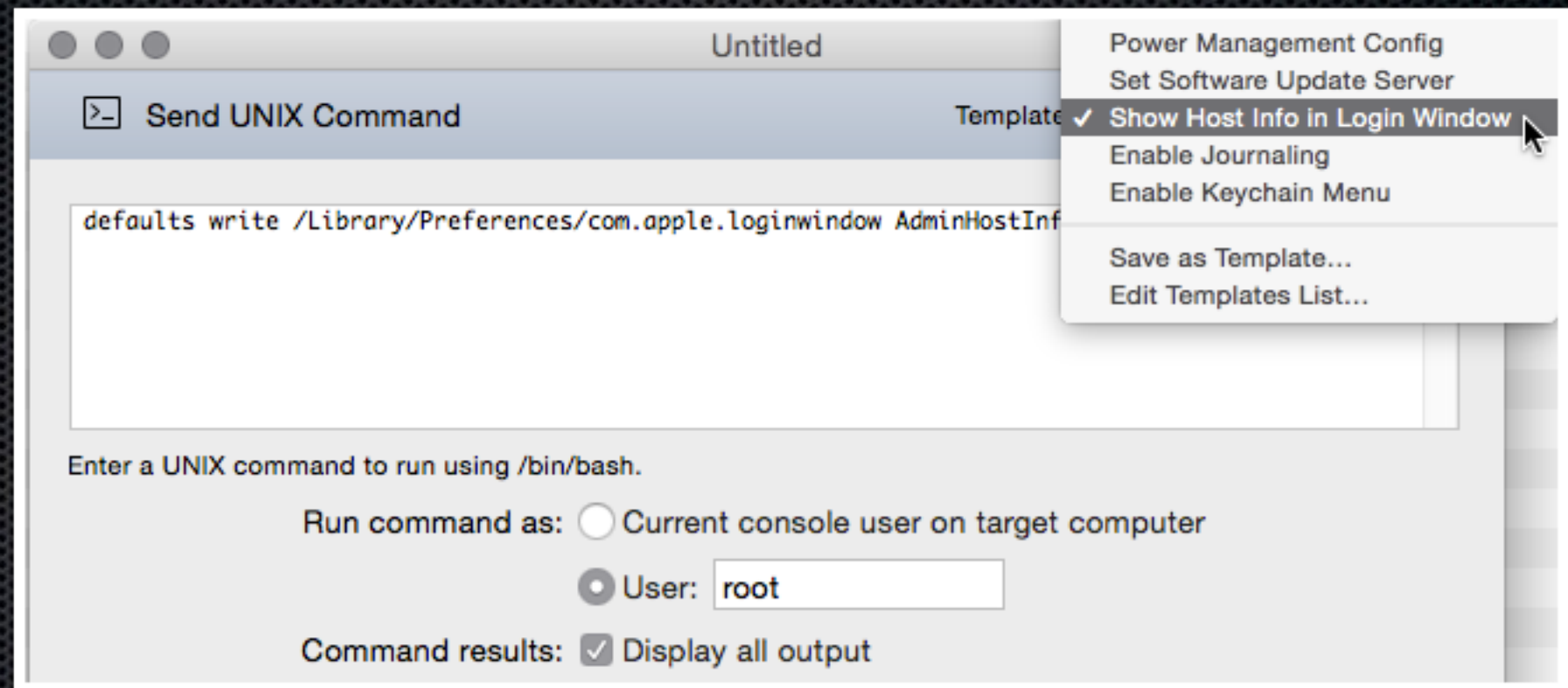
- SubnetCalc or SubnetMask.info
 - Endless Mask Calculations
 - See ranges, see broadcast.
- Network PreferencePane
 - Set TCP to manual, enter the ip & mask. 10.0.1.1/24

A screenshot of the SubnetCalc application window. The window has a title bar with three window control buttons. The main content area has a tabbed interface with four tabs: 'Address', 'Subnets', 'Subnets/Hosts', and 'CIDR'. The 'Subnets' tab is selected. The 'IP Address' field is set to '10.0.1.1'. Below the tabs, there are three columns: 'Subnet Bits' (set to 16), 'Mask Bits' (set to 24), and 'Subnet Mask' (set to 255.255.255.0). Below these are 'Max Subnets' (set to 65536) and 'Max Hosts / Subnets' (set to 254). The 'Subnet Host Address Range' field shows '10.0.1.1 - 10.0.1.254'. At the bottom, the 'Subnet ID' is '10.0.1.0' and the 'Subnet Broadcast' is '10.0.1.255'.A screenshot of the Network Preference Pane for IPv4 configuration. The 'Configure IPv4' dropdown is set to 'Manually'. The 'IP Address' field contains '10.0.1.1/24'. The 'Subnet Mask' and 'Router' fields are empty.

ARD - Apple Remote Desktop

Save time, improve memory

- Save common items to the sidebar.
- Save scripts as templates
- Repeat!
- Remember!



- <http://j.mp/MacTech-Pro-Allen-Command>

~/Library/Application\ Support/Remote\ Desktop/Presets/UnixCommandTask.plist



Too many ads



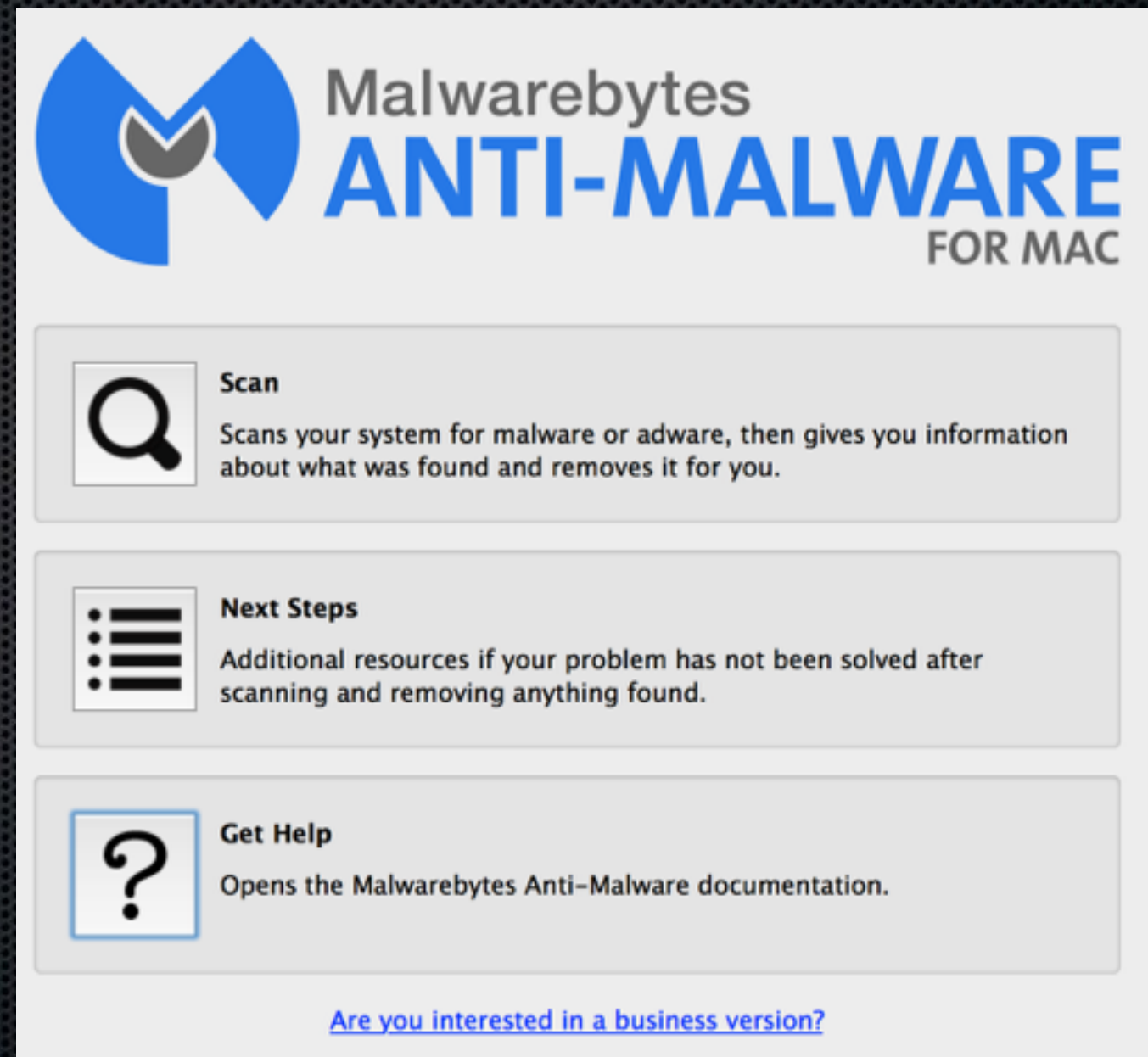
- Yes, Another Plug for
- MalwareBytes
 - Worst feature?
 - Best feature?
 - It has to be run manually



Too many ads



- Yes, Another Plug for
- MalwareBytes
 - Worst feature?
 - Best feature?
 - It has to be run manually
- But, Thomas Reed has a job



Dude, where's my screenshot?

- SnapNDrag
 - Simple screenshots of sections, windows, etc.
 - Keeps all screenshots in a central library
 - Resize, edit in Preview, revert to original
 - Rename & share
- Skitch
 - Advanced options for marking up images.
- Clarify
 - Quickly generate instructions with screenshots
 - Customize with branded template
 - Professional looking



Get off of my Mac



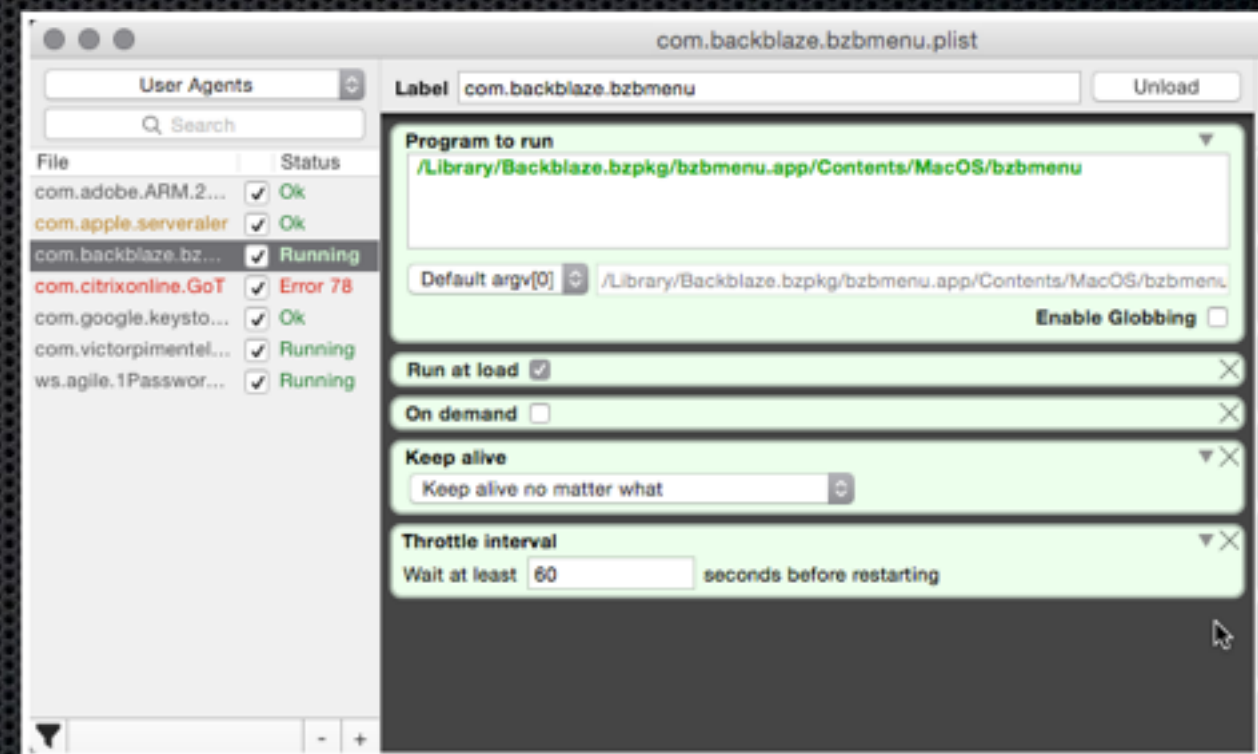
- BatChmod
 - Keeps all my 755s 755, recursively, if I want.
 - Strip xattr from files with ease.
- chflags
 - `chflags nohidden` will find that missing volume
- SideTrash
 - Move a file to the trash via Proxy icon
 - Useful if you like to have the trash available on every Finder window



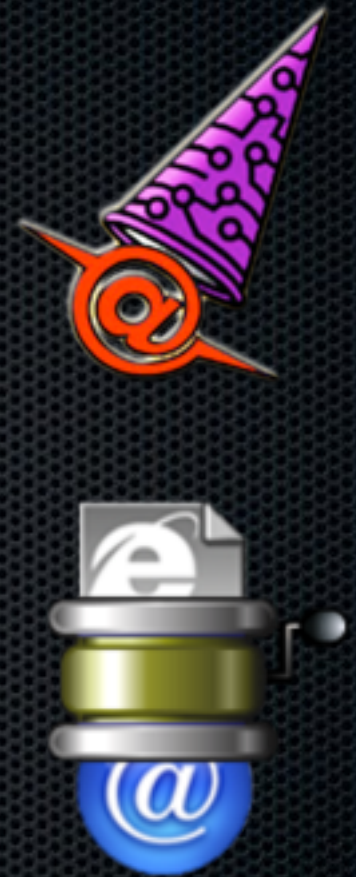
LaunchD-what?



- LaunchControl
 - Discover what's going on on your computer.
 - What's being run, from where, when.
 - Troubleshoot background processes
- launchd.info - Learn what makes a Mac mac.



Email tools



- Emailchemy
 - Convert, Migrate, Manage any format to any format.
- Email Extractor
 - Extracts every email address from a Mailbox & more.



Database Administration



- Sequel Pro - MySQL, Free
- Portico (formerly PG Commander)
Postgres, simple, friendly
- phpMyAdmin - MySQL, Free, web-based



Mac Models



- MacTracker
 - Determine Max Memory
 - Max Mac OS?
 - Search by Serial Number
 - Settle Bets
 - Learn your Apple History
- EveryMac - online runner up

MacTracker

Categories My Models

Add / Remove Donate

MacBook Pro

MacBook Pro (Retina, 15-inch)
February 2013 - October 2013

MacBook Pro (Retina, 13-inch)
MacBook Pro (Retina, 15-inch)

MacBook Pro (Retina, 2014)

General Software Memory and Graphics

OVERVIEW

Introduced July 2014

Discontinued --

Model Identifier MacBookPro11,2 (2.2 GHz)

Model Number A1398

EMC 2876

Order Number MGXA2LL/A (2.2 GHz) MGXA2LL/A

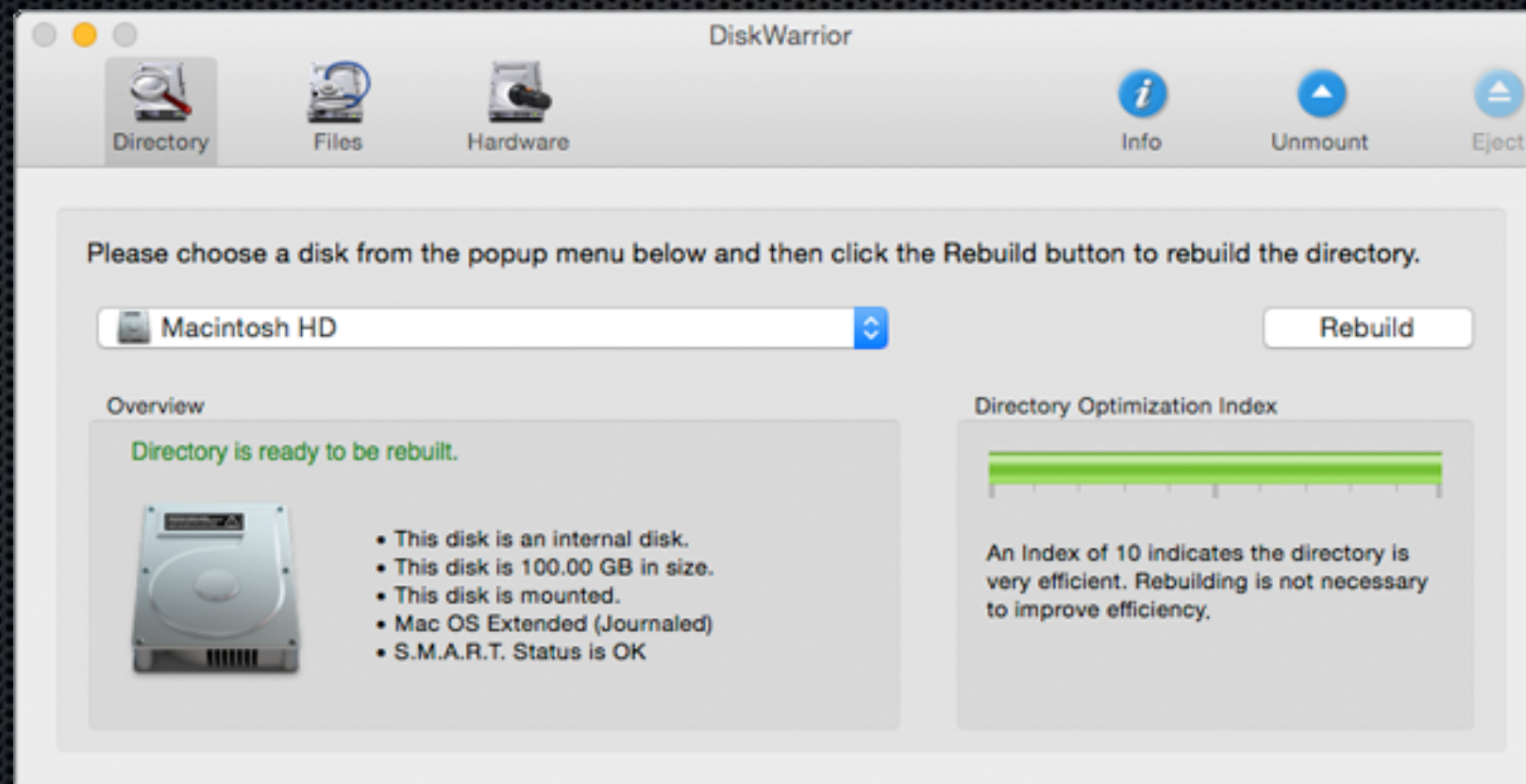
Initial Price \$1,999 (2.2 GHz), \$2,499



DiskWarrior



With a single click, DiskWarrior reads the damaged directory and finds all salvageable files and folders and builds a new error-free, optimized directory for you to use.



Questions?



Allen Hancock

watchman@watchmanmonitoring.com



Network Utilities

- WiFi Explorer
- WiFi-Signal - Handy Toolbar Utility
- CanYouSeeMe.org - Check Open Ports
- SubnetMask.info - Subnet calculator
- WhatsMyIP.org - Determine WAN IP
- Is that web site DownForEveryoneOrJustMe.com
- Wireshark
- NetSpot
- SpeedOf.me - HTML5 speed test (No Java or Flash)
- Server 4.0 (new reachability feature)



Email Grooming

- MxToolbox
- emailreg.org
- multirbl.valli.org/dnsbl-lookup/
- ProjectHoneyPot
- http://www.mcafee.com/threat-intelligence/ip/default.aspx
- http://www.reputationauthority.org/lookup.php
- SenderBase.org
- SenderScore
- http://www.kloth.net/services/dnsbl.php
- www.c-sirt.org/lang/en-us/incidents-on-ip



Web security tools

- www.internetofficer.com/seo-tool/redirect-check/
- [InlineStyler](#) - Convert CSS rules into inline attributes
- [Sucuri.net](#)
- <https://www.changedetection.com>



More Resources

- Common Ports for Apple Software [HT202944]
- DisplayMenu - Get the display menu back in 10.9 & 10.10



More Resources

- [PhoneView](#)
- [iExplore](#)
- [Munki](#)
- [AutoPkg](#) / [AutoPkgr](#)
- [Whatskeepingme](#)
- [Gemini](#) - duplicate finding
- [DiskDiags](#)
- [DiskDrill Pro](#) - Data Recovery
- [DataRescue](#) - Data Recovery
- [R-Studio](#) - Data Recovery
- [DriveGenius](#)
- [SmartUtility](#)
- [Onyx](#)
- [Cocktail](#)
- [iStumbler](#)
- [iNet](#)
- [Netspot Pro](#)
- [Transmit](#)
- [MacUpdate](#)
- [Grapho](#)
- [Draw.io](#)
- [Lucid Charts](#)
- [Paragon](#)
- [Tinkertool](#)
- [TimeMachine Editor](#)

