

Home Automation

Adam Schechter
Precision Audio Visual



MacTech Insight: Home Automation

January 10, 2013 2:00 PM - 2:50 PM

LVCC, North Hall N260

You've long heard about Apple's TV product and universal remote projects. Get the inside scoop on Apple's consumer play. What technologies can you interface with? Learn the opportunities with Apple at the core of a home automation solution.

Presenter(s):

- Adam Schechter – Director of Engineering , Precision Audio Visual

What is the Content and or device you want to control?

- Audio / Video / Environment
- Lighting / Climate / Physical Access
- Security / Energy Management

What we always Ask...

- How do you use your home > ?
 - Kids
 - Entertainment
 - Family Members
 - What devices do you currently own
 - Priorities, Security, Lighting, Access

Modular Lifecycle

- When Planning your system, look at this as a modular approach and build the highway so items can be added in the future.
- Do your OWN needs analysis, look at price benefit to do now vs. waiting.
- Selling our home... what would you take, what would you leave ?

AppleTV

What is it today....

AppleTV / movies



AppleTV / Mirroring



AppleTV / Photos & Video



AppleTV / iCloud



AppleTV / Airplay - Multiplayer Game



AppleTV / DualScreen



AppleTV / Whats Next

-- New Discussion --

lets move from the
Content to the

Architecture

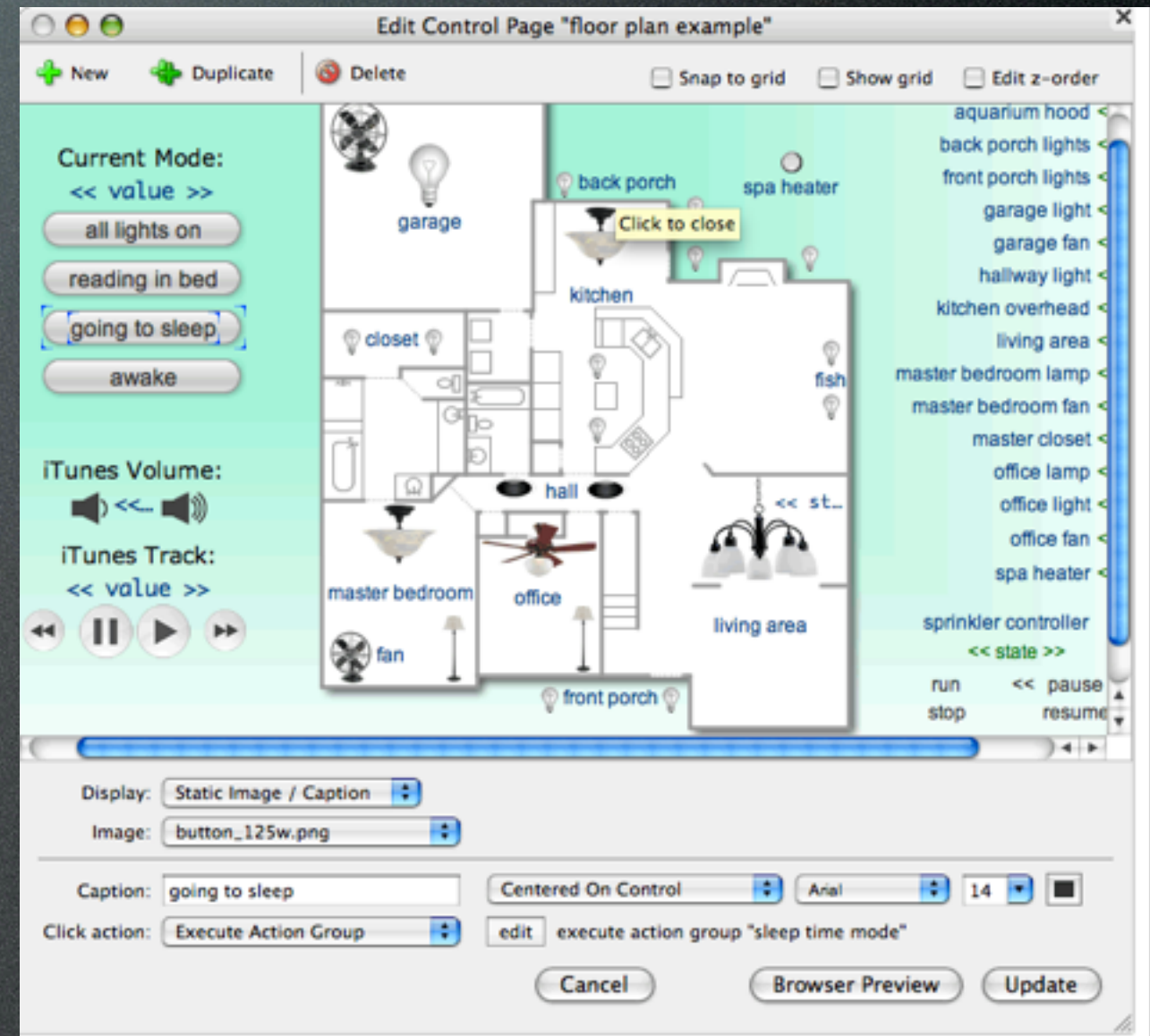
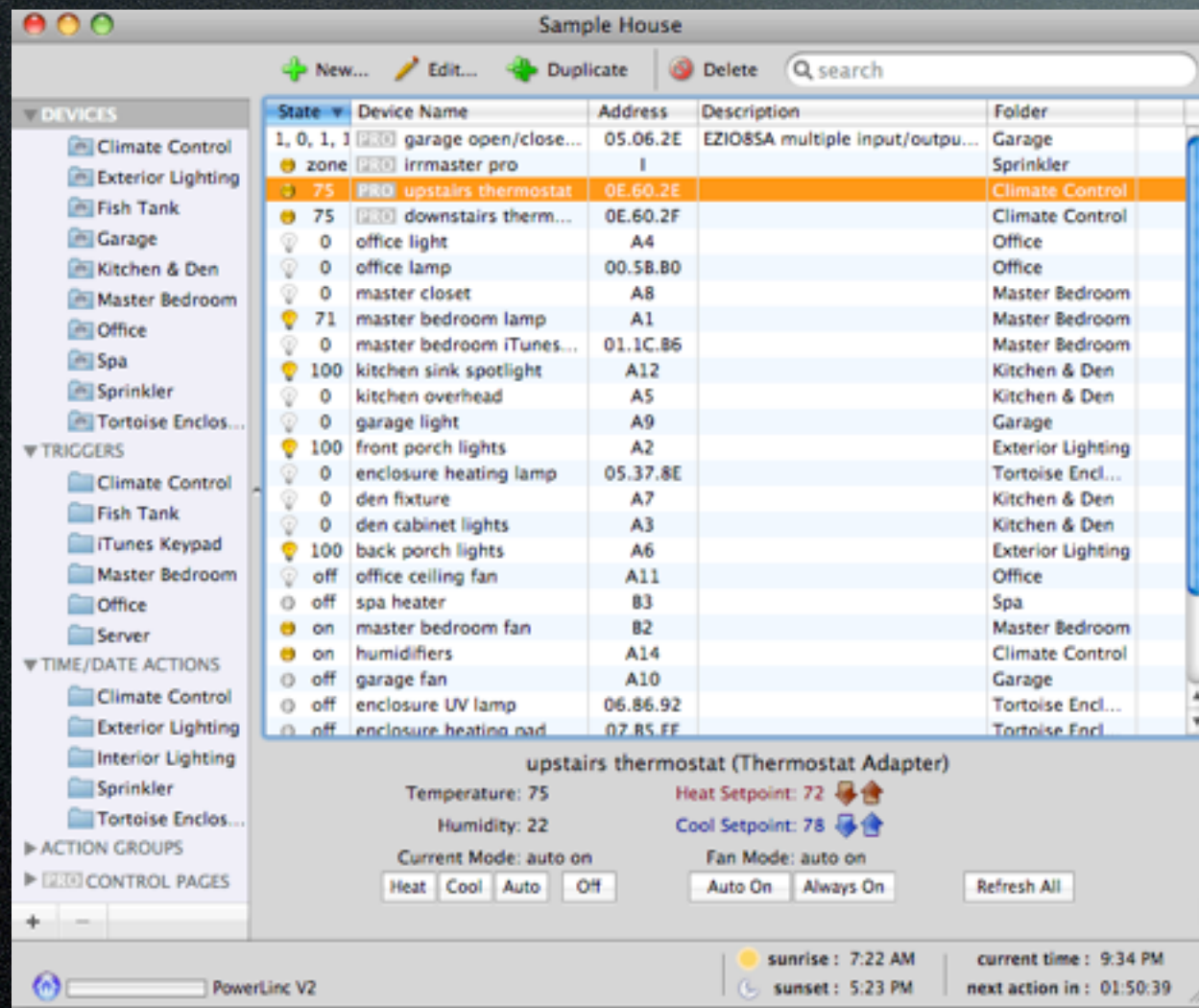
The Players

- Multiple Levels
 - Full Systems
 - Specific Systems by Service
 - iOS systems
 - Online Systems

Full Systems

	Backend	Control
• Savant	Apple	iOS, Mac App
Crestron	-----	iOS
Control 4	-----	iOS
AMX	-----	iOS

Indigo for Mac



Phillips Hue



Lutron Home Control



What are the specific parameters of that unique device that you want access or control of

- Lighting - Current Levels



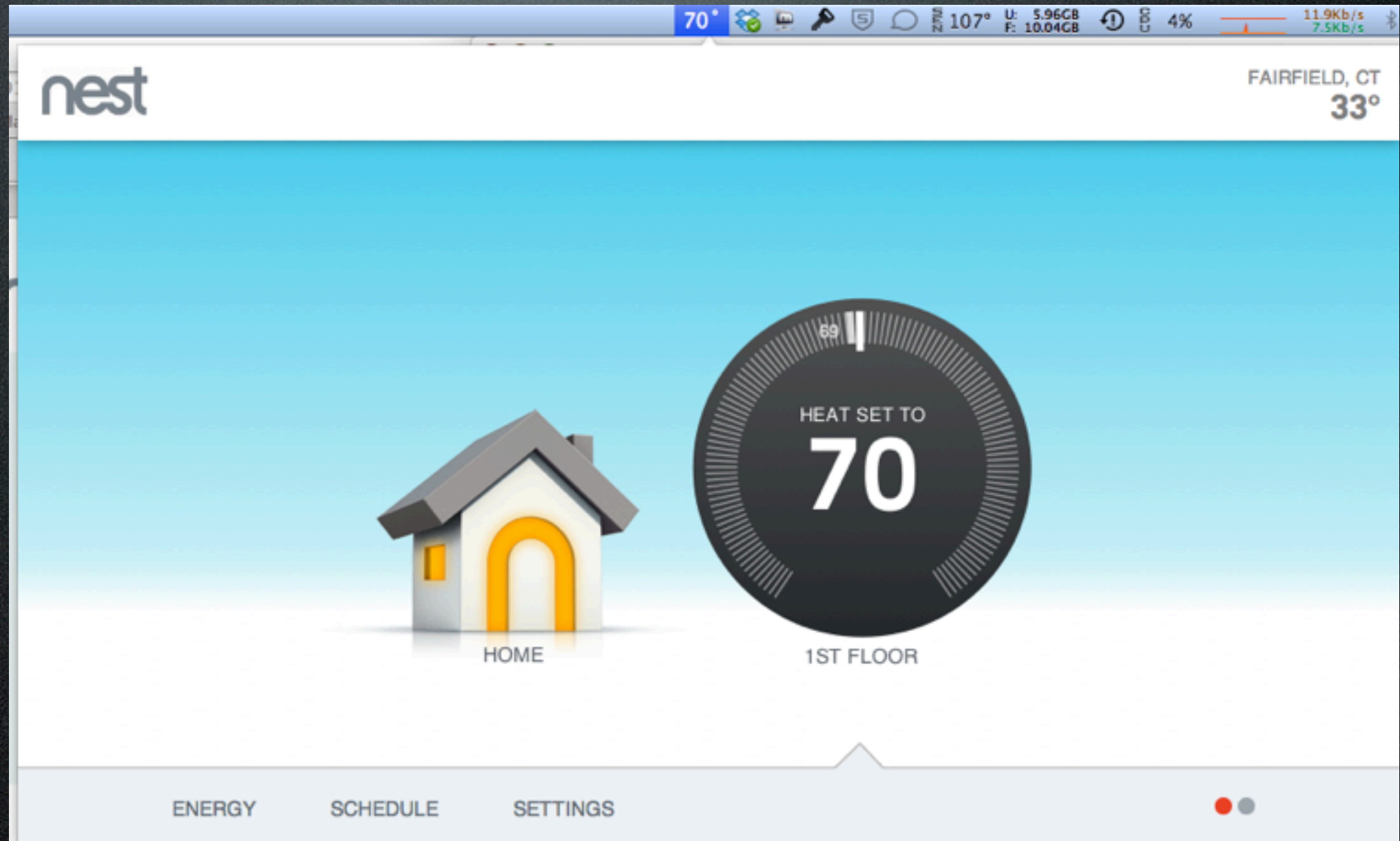
- Climate
- Current Temperature, Alarm Temperature
- Set Temperature



Climate



NEST- via Climate App



Savant



Why the Apple platform?

- Flexible Architecture
- Leverage Existing Applications and programming environment
- Access (local and Remote)
- Stability



At the Core of Savant's Platform... is Apple®

Apple's renowned operating system, OS X®, has been the driving force behind every Savant SmartSystem shipped since we first opened our doors. While other competing control companies claim to offer tight interoperability with Apple products, Savant goes beyond just integration. Savant provides a complete [home](#) and [commercial control](#), automation and entertainment product line built on an Apple platform, providing users with an unmatched level of responsiveness and a rich line of customizable iOS [user interface options](#).



**Value Added
Reseller**

Think about it...with Savant's iOS [home automation](#) and [commercial control](#) Apps, you have a command sequence where one Apple device is communicating directly to a OS X computer (Savant Host Controller) delivering a seamless, rapid and stable control connection.



Savant Host Controller – Apple Mac mini

At the heart of every residential or commercial installation is a conveniently enclosed Apple Mac mini, the [Savant Host Controller](#). This rackable device, which hosts Savant's proprietary configuration and control software RacePoint Blueprint™, provides numerous functions including powerful automation and control, user interface interpretations, system administration, monitoring and more. The Mac mini directly communicates with Savant's entire line of touch panels, remotes, keypads, mobile devices, and on-screen display navigation utilizing award-winning applications and technology such as TrueControl, TrueImage and TrueCommand.

An additional Mac mini (Savant Host Controller) can be included to any install to provide zero-latency redundancy. [Learn More...](#)

↓ [Download Now](#)

Easy on the Environment.

[Download](#) the Mac mini Environmental Report (PDF).

Apple Content

- iTunes Purchased Content
 - *Apps, Music, Movies*
- iOS Devices (Your Content)
 - *Photos, Videos, Mirroring*

Accessing that Content

- Via Apple TV
- Via iTunes
- Utilizing the Metadata
- Keeping in step with Apple iCloud data
- Apple Licensing of Protected content and how you can access it

Access to your Content



Songs (*Artwork & Metadata*)



Control Technology

- Wireless
 - IP
 - Zigbee
 - Zwave
- Wired
 - CC, Serial, IR, IP

Control

- Basic Control - Contact Closure



Control

- IR Basic one way Control
- No feedback on status or if the command was received



Hardware Content Gateways

- Logitech Squeezebox
- Roku
- AppleTV
- Fusion Media Player
- Receivers....

Hardware Control Gateways

- Global Cache
- Niles
- Savant
- RTI
- Many Others....

Q&A

adam@pav.us.com