



krypted.com

Regression Testing

Charles Edge
Chief Technology Officer, 318

A software regression is a software bug which makes a feature stop functioning as intended after a certain event
-Wikipedia



The Monolithic Image



Random Testing



SQA Tester	Date				
salired					
Test Area	Use Case	Ris	Impa	Priorit	Steps to Recreate
Software Updates	Verify connection to MacSUS	2	2	2	1. Click the Apple in the upper left corner.
Wireless	Verify Basic connectivity to WDSHE Wireless:	1	1	1	Establish connection to the supported WDSHE Wireless Network 1. Click airport icon in the Menu Bar 2. Select WDSHE Wireless
Wireless	Verify proper placement in Network Prefs:	1	1	1	1. Open system preferences
Wireless	Wake from Sleep	1	1	1	Before you begin, make sure you have disconnected the Ethernet enabled the wireless connection.
Wireless	Move between Access Points while	1	1	1	Before you begin, make sure you have disconnected the Ethernet
Wireless	Verify multiple users do not automatically	2	3	2.5	1. Navigate to System Preferences >> Accounts.
Wireless	verify gConnect through Wireless	1	1	1	NOTE: You must first verify the proper service order (above) in ord
Casper	Verify Casper QuickAdd Package	1	1	1	1. Launch Terminal application
	Locate the test system in Casper	1	1	1	Send the IP and / or machine name to the Deployment Engineer
	Perform Inventory	1	1	1	The Deployment Engineer will execute this function
	Remote Control	1	1	1	The Deployment Engineer will execute this function
	Software Distribution	1	1	1	The Deployment Engineer will execute this function
	Verify Package Version	1	1	1	The Deployment Engineer will execute this function
	Verify Asset Information	1	1	1	The Deployment Engineer will execute this function
	Verify User (UnixID)	1	1	1	The Deployment Engineer will execute this function
	pairing for BlueTooth Mouse	2	1	1.5	Acquire the mouse from the SQA Lead
	pairing for BlueTooth Keyboard	2	1	1.5	Acquire the Keyboard from the SQA Lead
Directory Settings	Verify 2 LDAP configurations in Directory Utility	1	1	1	Make sure you are connected to the WDSHE network by ethernet 1. Navigate to Applications >> Utilities
Adobe Reader	Verify Adobe Reader 9	1	2	1.5	1. Navigate to Applications >> Adobe Reader 9
iLife Applications	iTunes, iWeb, iMovie, iDVD	3	1	2	Verify that all applications exist in the Applications folder
WDSHE Folder	Verify Applications	2	1	1.5	Navigate to Applications >> Utilities >> WDSHE
	Verify VPN configuration file	1	1	1	1. Navigate to System Preferences >> Network
	Verify Retrospect installer	1	1	1	1. Navigate to Applications >> Utilities >> WDSHE
Flip-4-Mac	Verify Installation	3	3	3	1. Open System Preferences
Mail	Verify Exchange Setup	2	1	1.5	Setup Mail with the following preferences: Email = <unixID>@EXAMPLE.COM
	Directory lookup should only pull one entry	1	1	1	1. Click New Message
	Verify Core Functionality: Send / Receive	2	1	1.5	1. Send yourself an email with any small attachment.
Real Player	Verify Version 10.1	3	3	3	1. Acquire a RealPlayer file from the SQA Lead.
Groupware Apps	iCal	2	1	1.5	
	Address Book	2	1	1.5	



I Thin Image + 5 Package Combinations



SQA Tester	Date				
salired					
Test Area	Use Case	Ris	Impa	Priorit	Steps to Recreate
Software Updates	Verify connection to MacSUS	2	2	2	1. Click the Apple in the upper left corner.
Wireless	Verify Basic connectivity to WDSHE Wireless:	1	1	1	Establish connection to the supported WDSHE Wireless Network 1. Click airport icon in the Menu Bar 2. Select WDSHE Wireless
Wireless	Verify proper placement in Network Prefs:	1	1	1	1. Open system preferences
Wireless	Wake from Sleep	1	1	1	Before you begin, make sure you have disconnected the Ethernet enabled the wireless connection.
Wireless	Move between Access Points while	1	1	1	Before you begin, make sure you have disconnected the Ethernet
Wireless	Verify multiple users do not automatically	2	3	2.5	1. Navigate to System Preferences >> Accounts.
Wireless	verify gConnect through Wireless	1	1	1	NOTE: You must first verify the proper service order (above) in ord
Casper	Verify Casper QuickAdd Package	1	1	1	1. Launch Terminal application
	Locate the test system in Casper	1	1	1	Send the IP and / or machine name to the Deployment Engineer
	Perform Inventory	1	1	1	The Deployment Engineer will execute this function
	Remote Control	1	1	1	The Deployment Engineer will execute this function
	Software Distribution	1	1	1	The Deployment Engineer will execute this function
	Verify Package Version	1	1	1	The Deployment Engineer will execute this function
	Verify Asset Information	1	1	1	The Deployment Engineer will execute this function
	Verify User (UnixID)	1	1	1	The Deployment Engineer will execute this function
	pairing for BlueTooth Mouse	2	1	1.5	Acquire the mouse from the SQA Lead
	pairing for BlueTooth Keyboard	2	1	1.5	Acquire the Keyboard from the SQA Lead
Directory Settings	Verify 2 LDAP configurations in Directory Utility	1	1	1	Make sure you are connected to the WDSHE network by ethernet 1. Navigate to Applications >> Utilities
Adobe Reader	Verify Adobe Reader 9	1	2	1.5	1. Navigate to Applications >> Adobe Reader 9
iLife Applications	iTunes, iWeb, iMovie, iDVD	3	1	2	Verify that all applications exist in the Applications folder
WDSHE Folder	Verify Applications	2	1	1.5	Navigate to Applications >> Utilities >> WDSHE
	Verify VPN configuration file	1	1	1	1. Navigate to System Preferences >> Network
	Verify Retrospect installer	1	1	1	1. Navigate to Applications >> Utilities >> WDSHE
Flip-4-Mac	Verify Installation	3	3	3	1. Open System Preferences
Mail	Verify Exchange Setup	2	1	1.5	Setup Mail with the following preferences: Email = <unixID>@EXAMPLE.COM
	Directory lookup should only pull one entry	1	1	1	1. Click New Message
	Verify Core Functionality: Send / Receive	2	1	1.5	1. Send yourself an email with any small attachment.
Real Player	Verify Version 10.1	3	3	3	1. Acquire a RealPlayer file from the SQA Lead.
Groupware Apps	iCal	2	1	1.5	
	Address Book	2	1	1.5	



14 Images + 64 Package
Combinations



SQA Tester	Date				
salired					
Test Area	Use Case	Ris	Impa	Priorit	Steps to Recreate
Software Updates	Verify connection to MacSUS	2	2	2	1. Click the Apple in the upper left corner.
Wireless	Verify Basic connectivity to WDSHE Wireless:	1	1	1	Establish connection to the supported WDSHE Wireless Network 1. Click airport icon in the Menu Bar 2. Select WDSHE Wireless
Wireless	Verify proper placement in Network Prefs:	1	1	1	1. Open system preferences
Wireless	Wake from Sleep	1	1	1	Before you begin, make sure you have disconnected the Ethernet enabled the wireless connection.
Wireless	Move between Access Points while	1	1	1	Before you begin, make sure you have disconnected the Ethernet
Wireless	Verify multiple users do not automatically	2	3	2.5	1. Navigate to System Preferences >> Accounts.
Wireless	verify gConnect through Wireless	1	1	1	NOTE: You must first verify the proper service order (above) in ord
Casper	Verify Casper QuickAdd Package	1	1	1	1. Launch Terminal application
	Locate the test system in Casper	1	1	1	Send the IP and / or machine name to the Deployment Engineer
	Perform Inventory	1	1	1	The Deployment Engineer will execute this function
	Remote Control	1	1	1	The Deployment Engineer will execute this function
	Software Distribution	1	1	1	The Deployment Engineer will execute this function
	Verify Package Version	1	1	1	The Deployment Engineer will execute this function
	Verify Asset Information	1	1	1	The Deployment Engineer will execute this function
	Verify User (UnixID)	1	1	1	The Deployment Engineer will execute this function
	pairing for BlueTooth Mouse	2	1	1.5	Acquire the mouse from the SQA Lead
	pairing for BlueTooth Keyboard	2	1	1.5	Acquire the Keyboard from the SQA Lead
Directory Settings	Verify 2 LDAP configurations in Directory Utility	1	1	1	Make sure you are connected to the WDSHE network by ethernet 1. Navigate to Applications >> Utilities
Adobe Reader	Verify Adobe Reader 9	1	2	1.5	1. Navigate to Applications >> Adobe Reader 9
iLife Applications	iTunes, iWeb, iMovie, iDVD	3	1	2	Verify that all applications exist in the Applications folder
WDSHE Folder	Verify Applications	2	1	1.5	Navigate to Applications >> Utilities >> WDSHE
	Verify VPN configuration file	1	1	1	1. Navigate to System Preferences >> Network
	Verify Retrospect installer	1	1	1	1. Navigate to Applications >> Utilities >> WDSHE
Flip-4-Mac	Verify Installation	3	3	3	1. Open System Preferences
Mail	Verify Exchange Setup	2	1	1.5	Setup Mail with the following preferences: Email = <unixid>@EXAMPLE.COM
	Directory lookup should only pull one entry	1	1	1	1. Click New Message
	Verify Core Functionality: Send / Receive	2	1	1.5	1. Send yourself an email with any small attachment.
Real Player	Verify Version 10.1	3	3	3	1. Acquire a RealPlayer file from the SQA Lead.
Groupware Apps	iCal	2	1	1.5	
	Address Book	2	1	1.5	



And Profile Combinations...



$$2\% \text{ of } 10,000 = 200$$







Scripting

less cat cut more tail



A dark gray rectangular icon with a double border, containing a light gray prompt character consisting of a greater-than sign followed by an underscore (>_).

defaults read com.apple.screensaver

A faint, stylized icon of a terminal window is centered in the background. It features a dark rectangular frame with a lighter inner rectangle. Inside the inner rectangle, there is a large, light-colored greater-than sign (>) followed by a horizontal line, resembling a command prompt.

systemsetup, networksetup




```
spawn telnet $angry_birds_server
expect "username:"
send "$no_eagles\r"
expect "password:"
send "$my_password\r"
expect "%Tk"
send "$play_game\r"
expect "%"
set results $expect_piggies(buffer)
send "exit\r"
expect eof
```

Does The GUI Behave
As It Should?!?!?



Sikuli

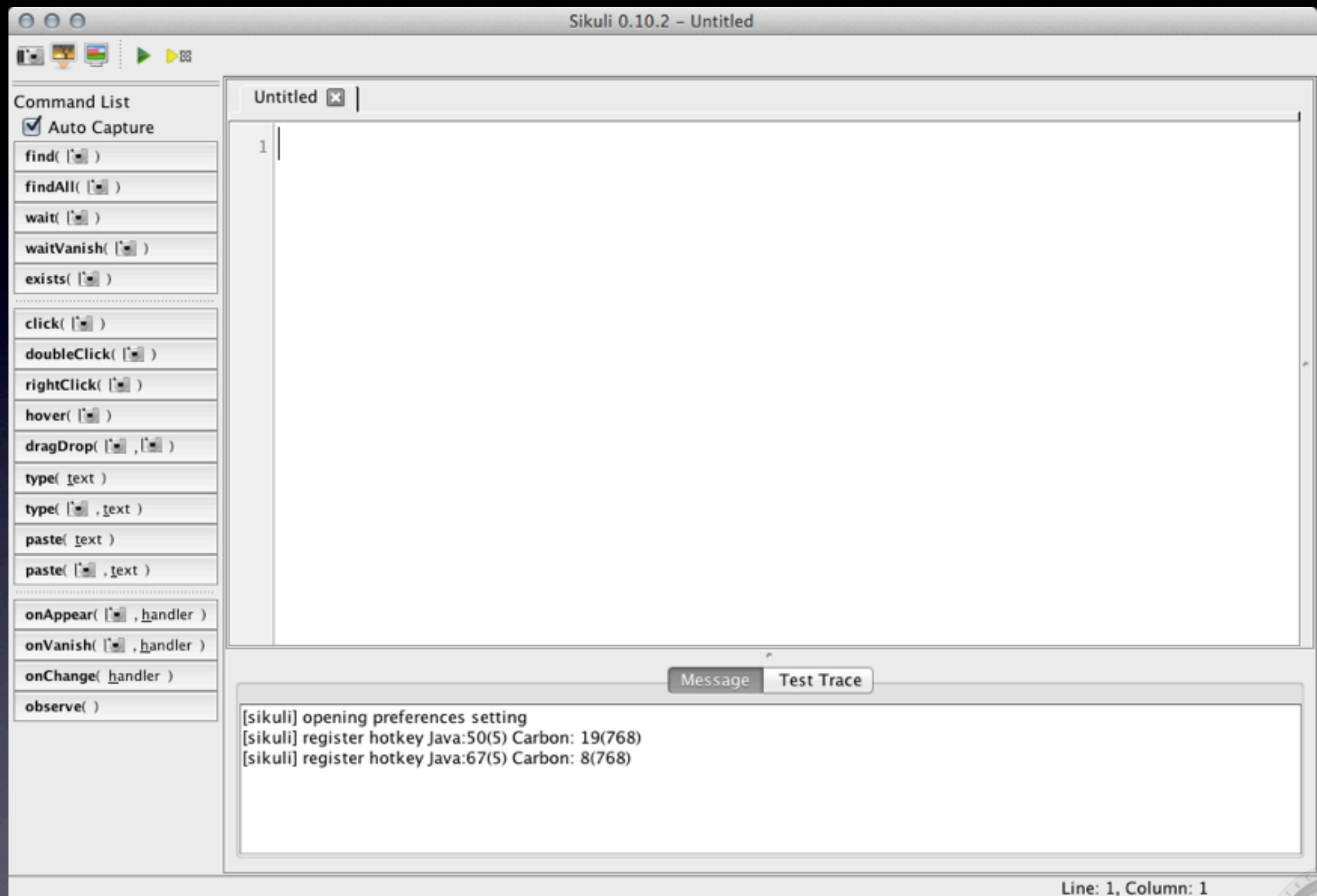


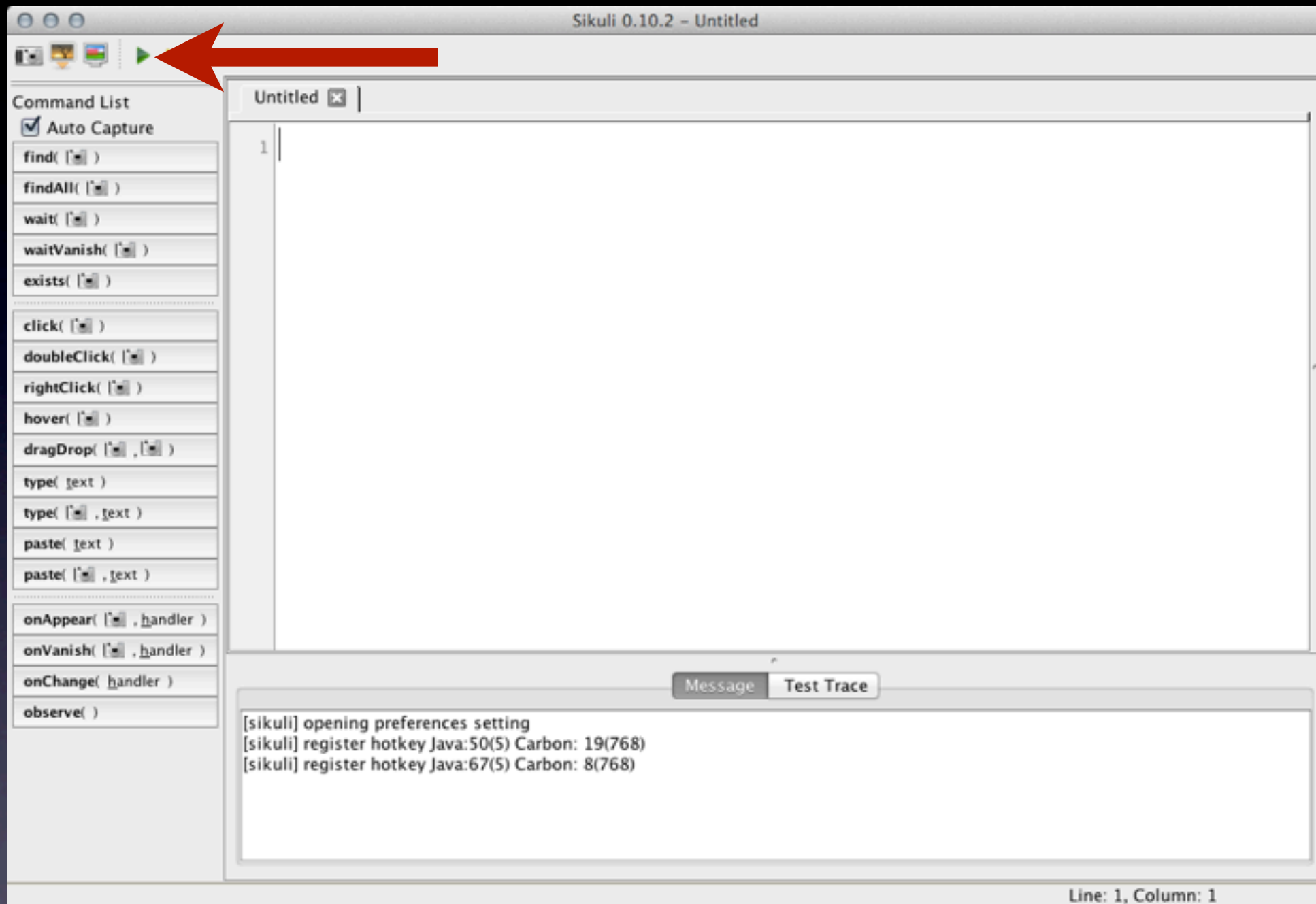
sikuli

Free

<http://sikuli.org>

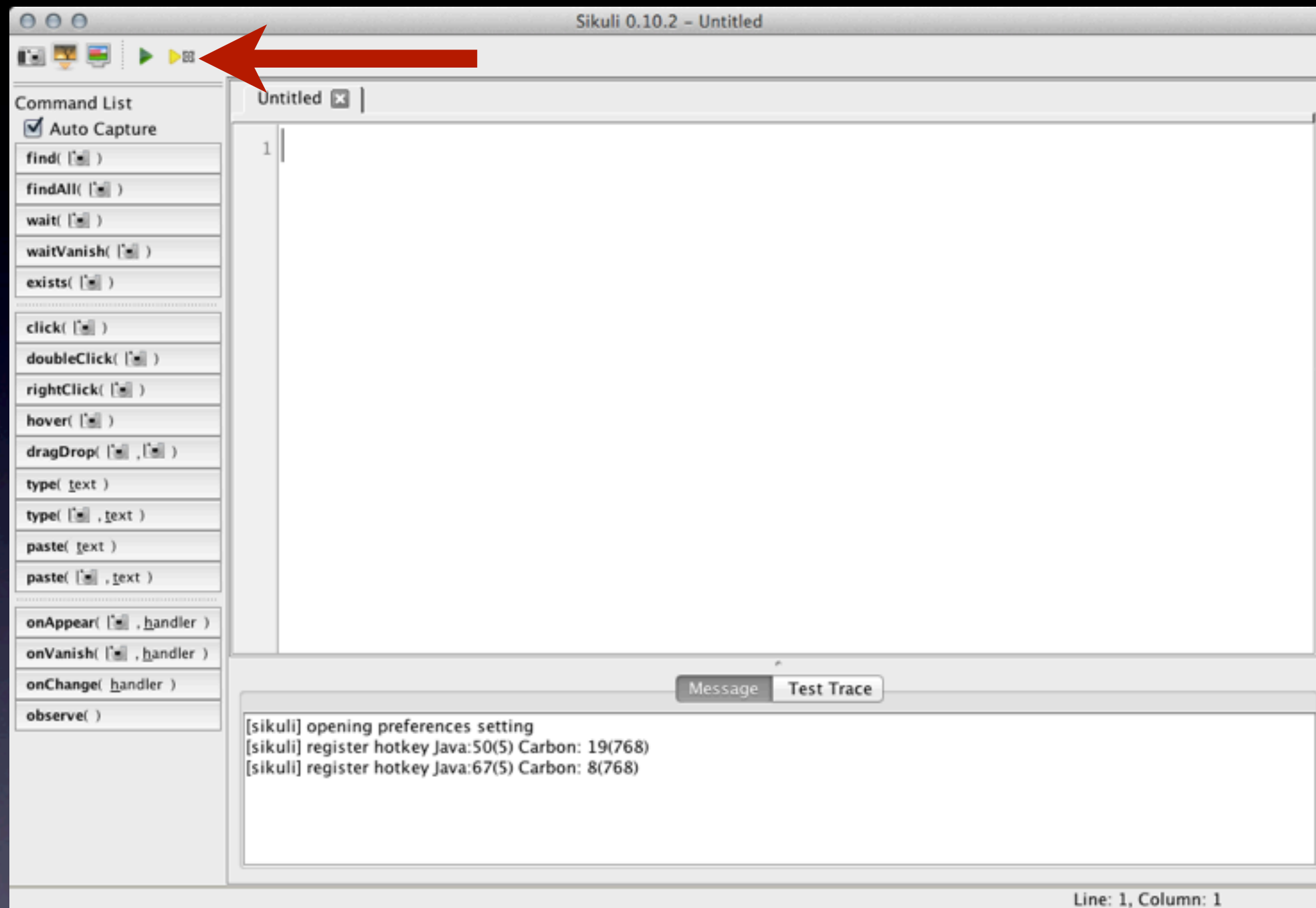






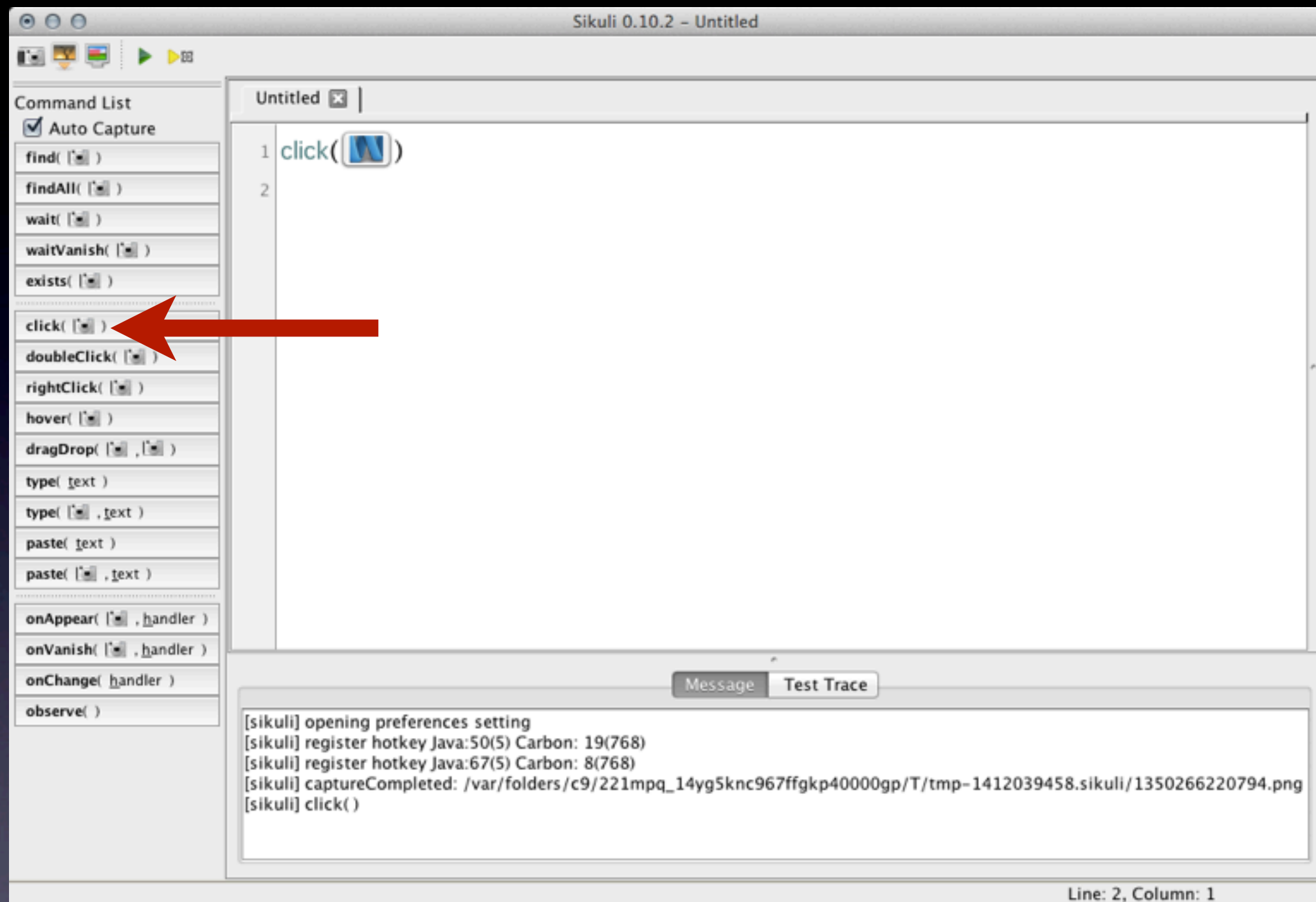
Runs a Workflow





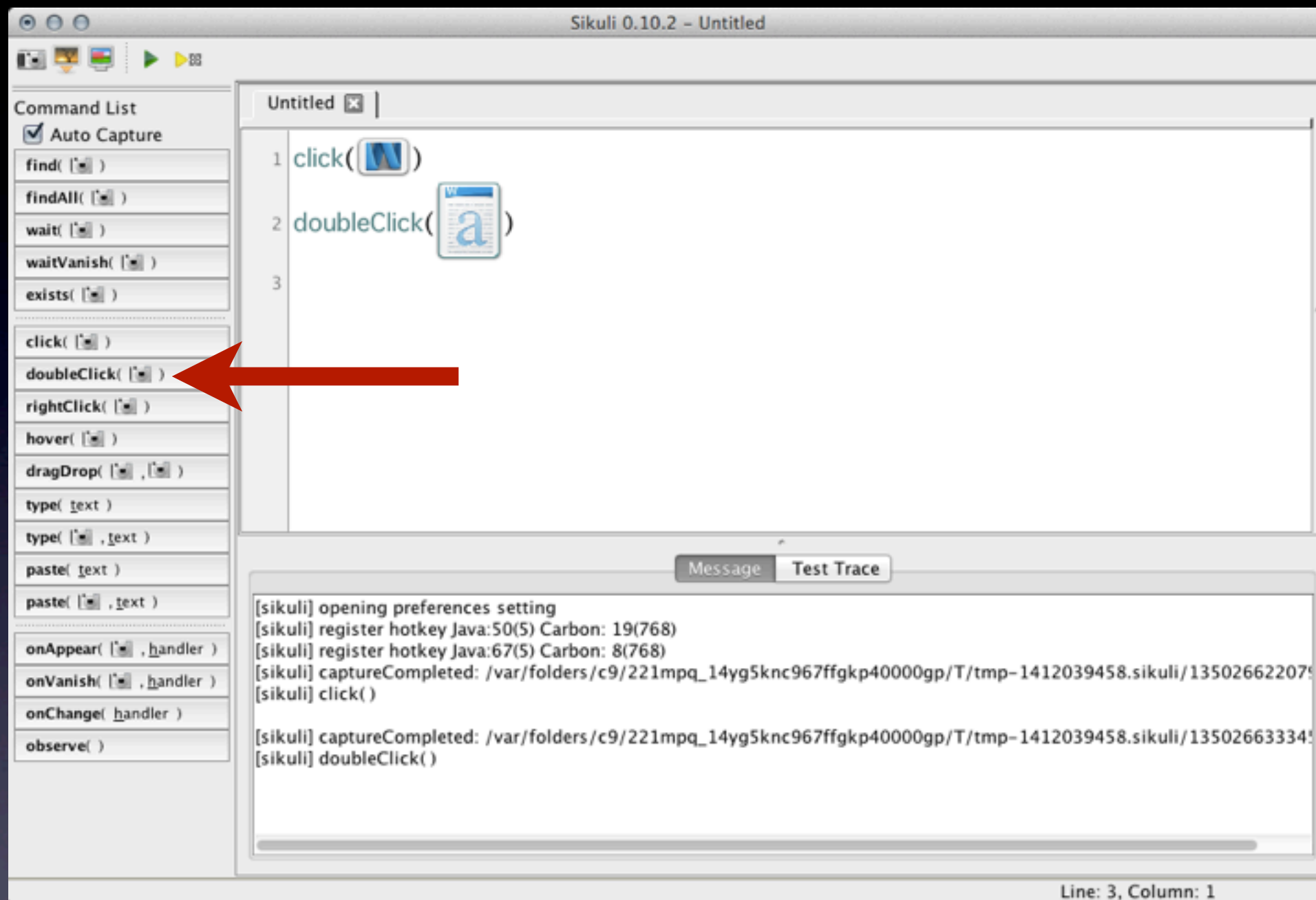
Runs Slow





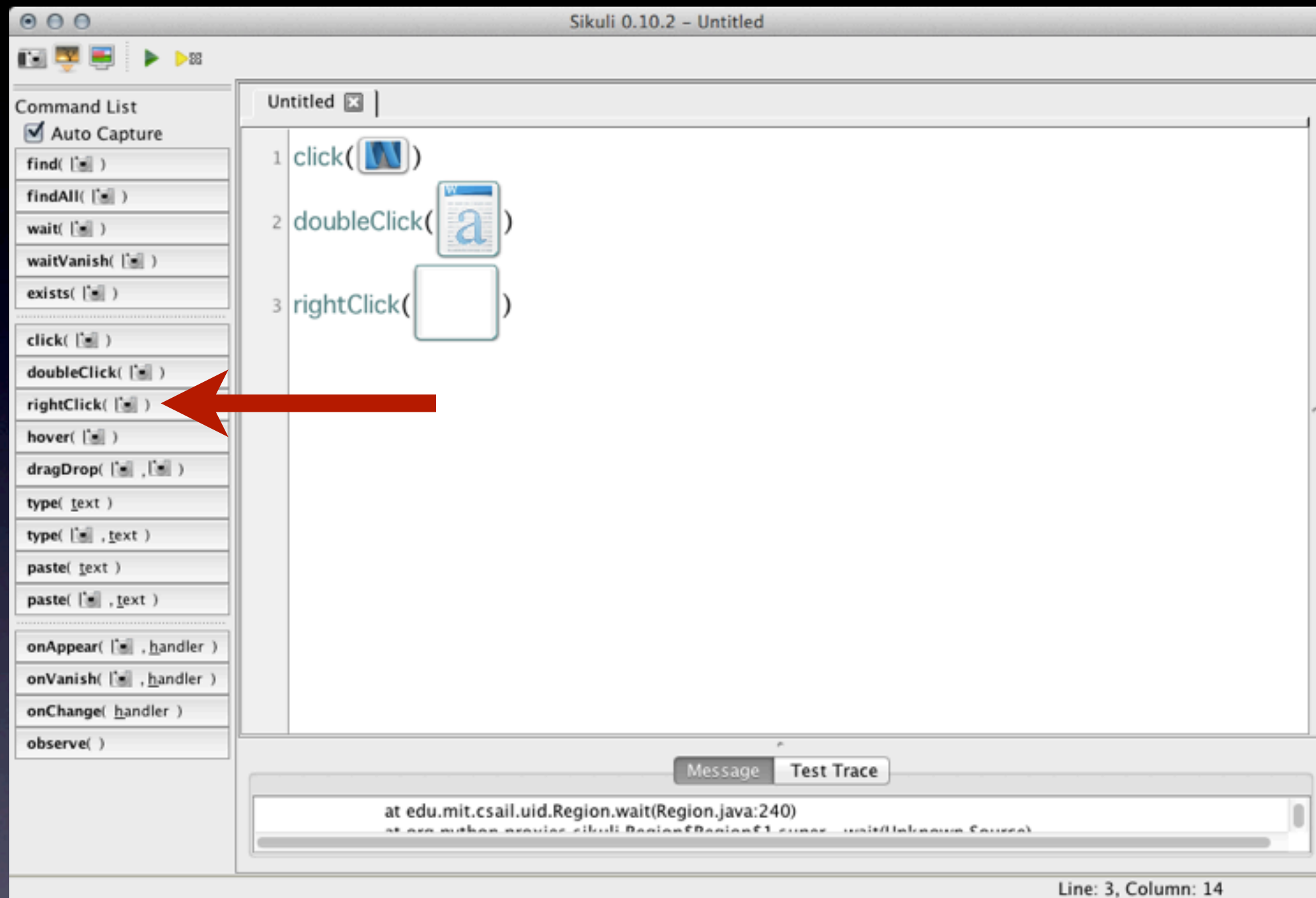
Clicks on Something





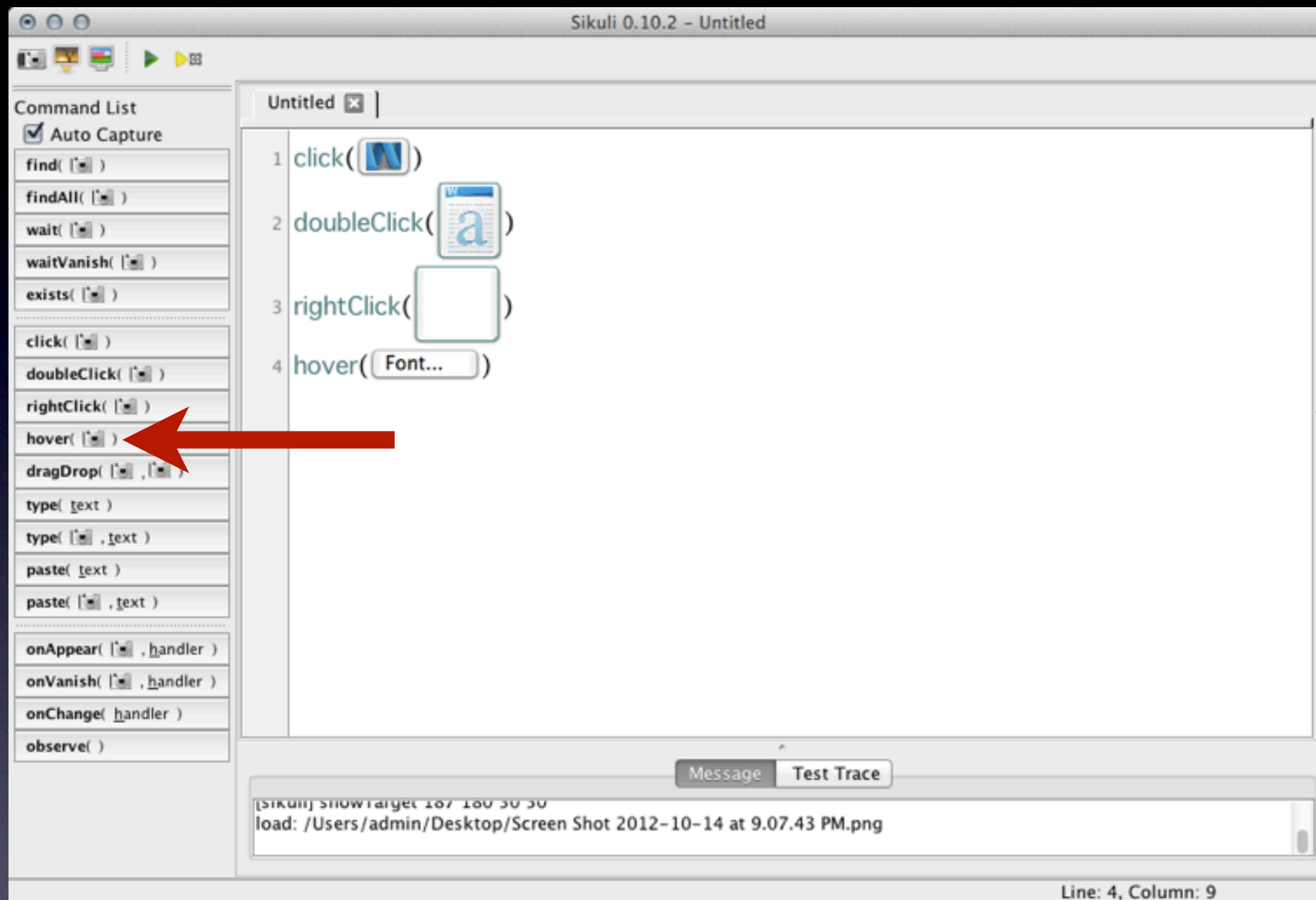
DoubleClicks



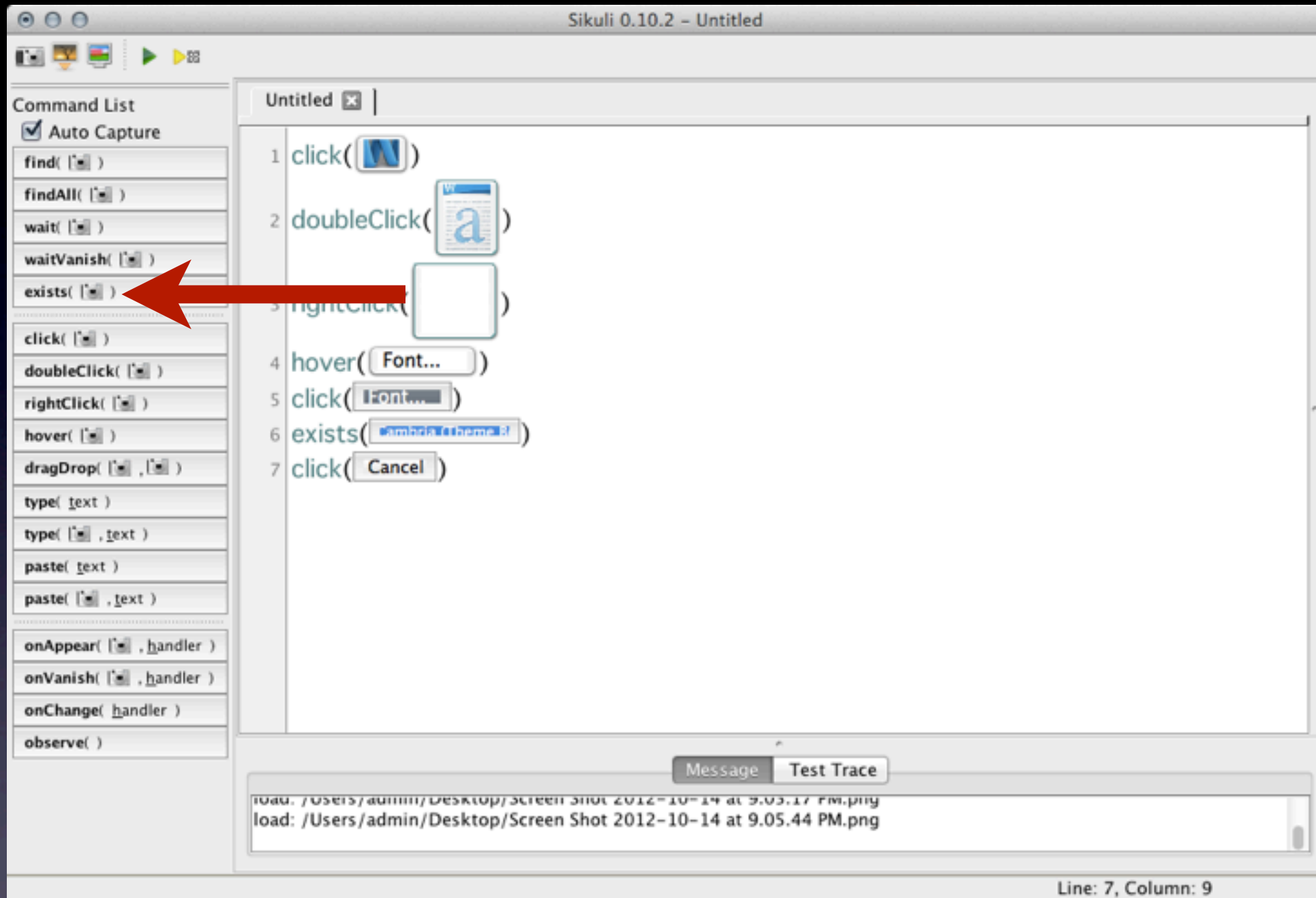


RightClicks





Hovers

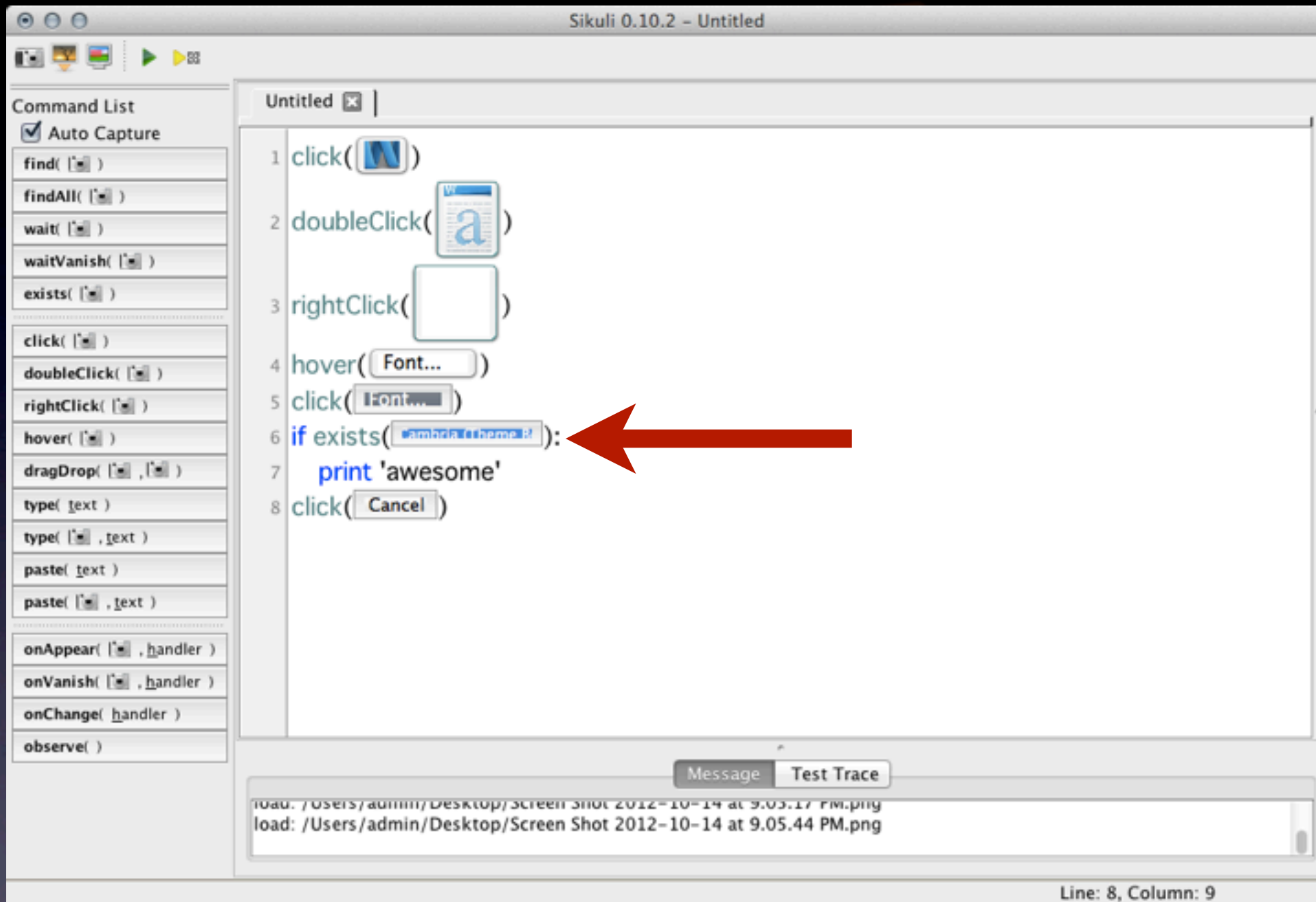


Exists



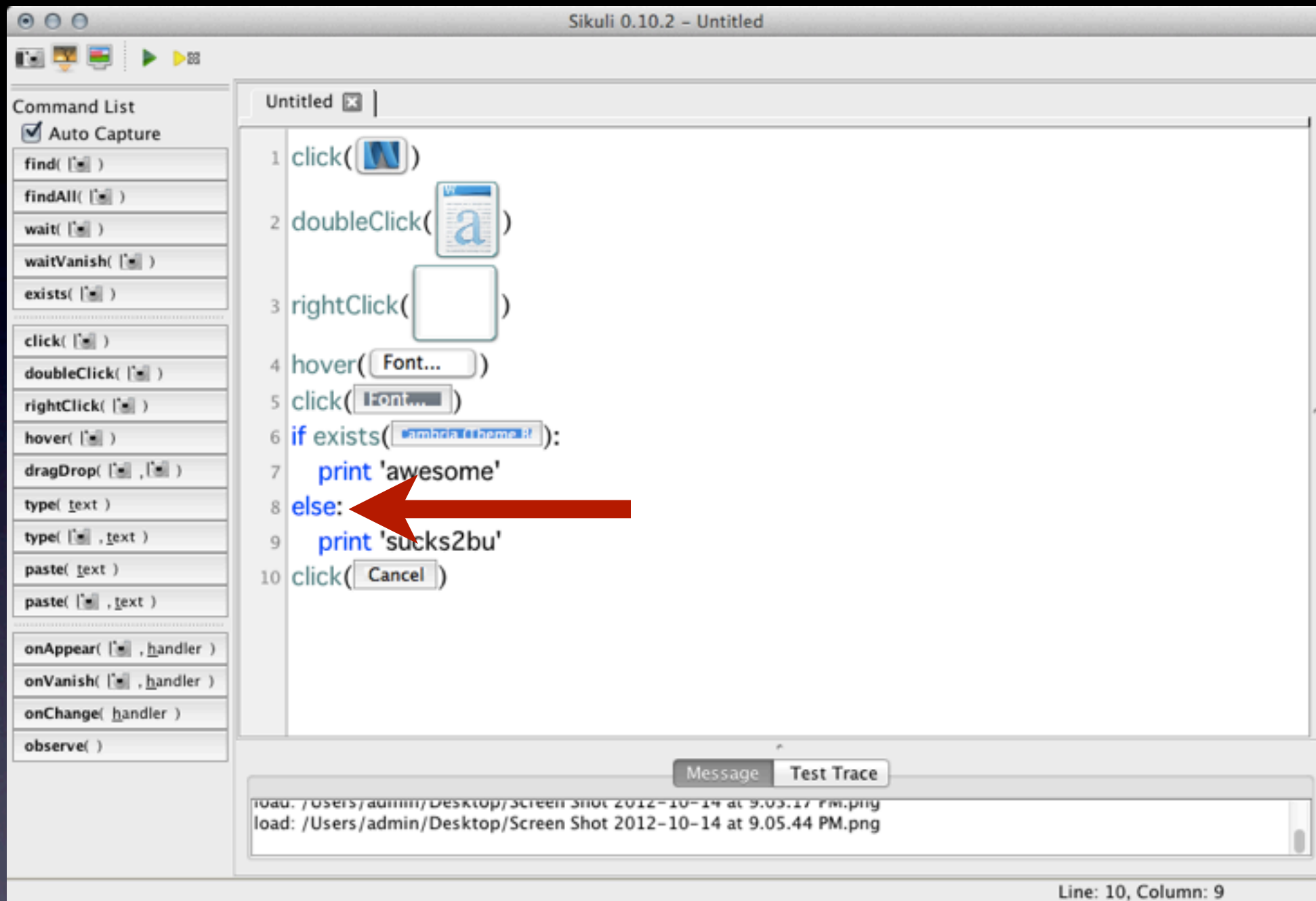
The background of the slide features a dark, textured surface. In the center, there is a faint, semi-transparent logo for 'Silkuli Script'. The logo consists of the word 'Silkuli' in a sans-serif font, with the 'i' and 'l' having a unique, rounded shape. Below it, the word 'Script' is written in a larger, more stylized font. A fountain pen is positioned diagonally across the lower right portion of the logo, pointing towards the bottom left.

Jython



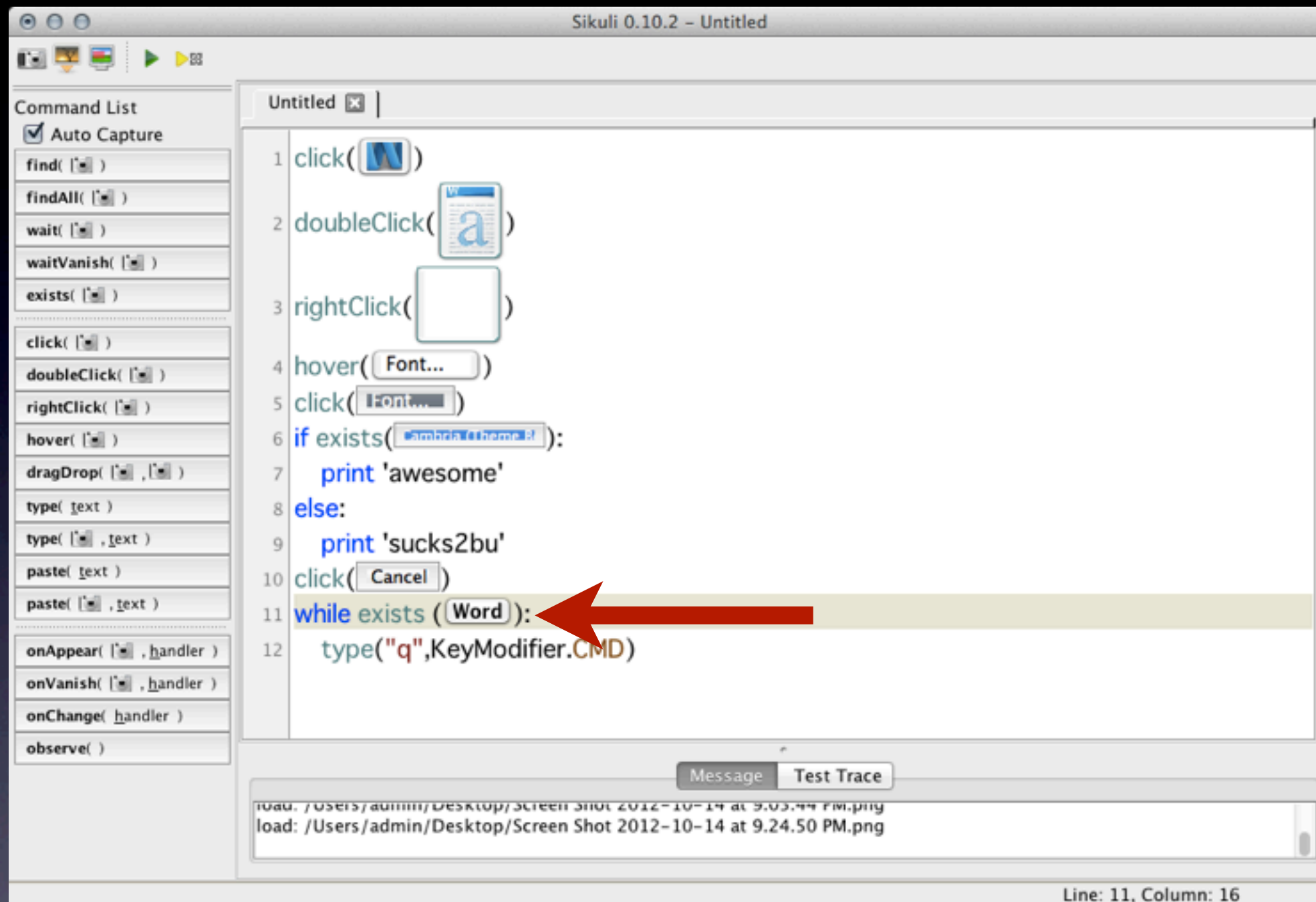
thien



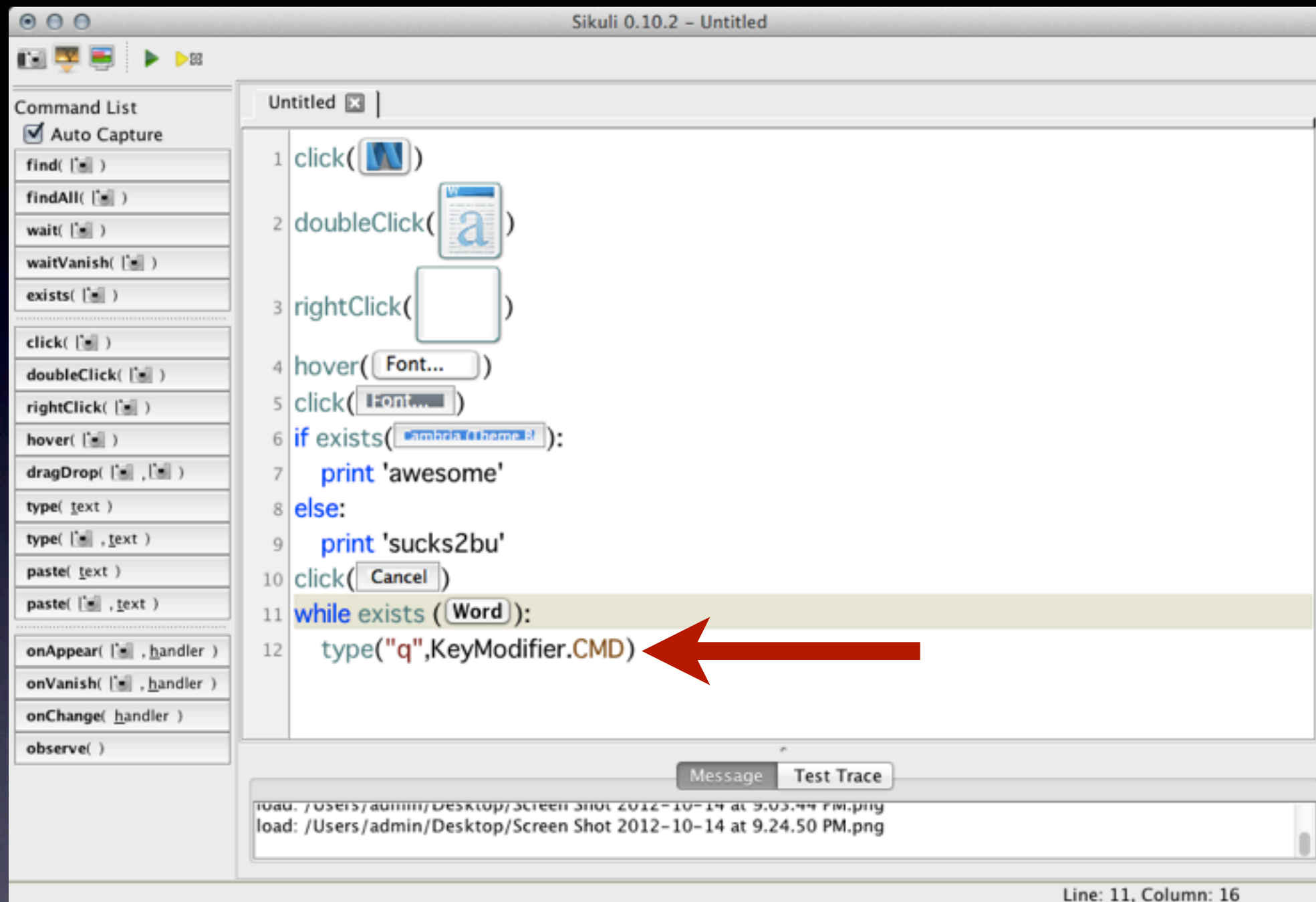


Else





While



type

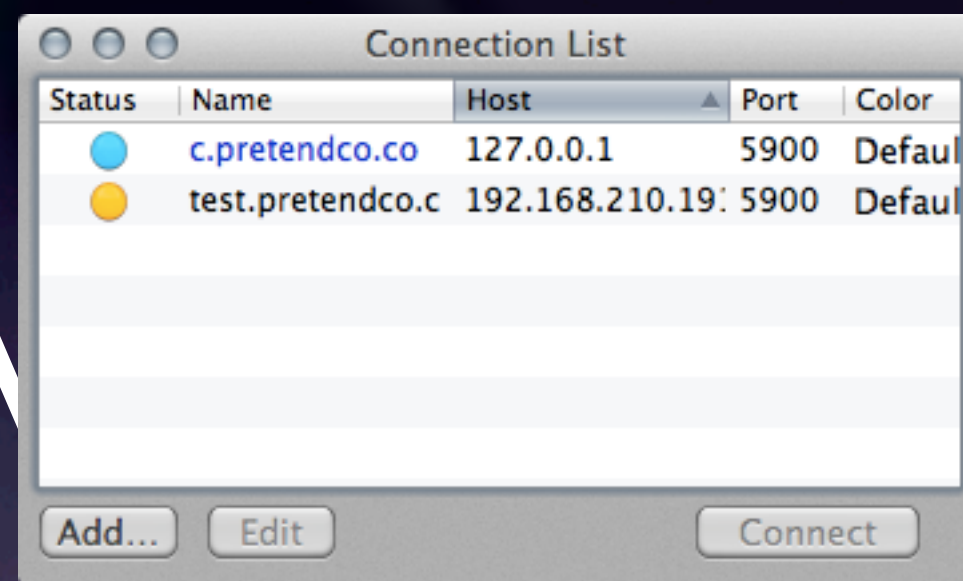




sikuli-ide.sh



TestPlant / Eggplant





Status	Name	Host	Port	Color
	c.pretendco.co	127.0.0.1	5900	Default
	test.pretendco.c	192.168.210.19	5900	Default

Add... Edit Connect

“Suite” of tests



N

test.suite

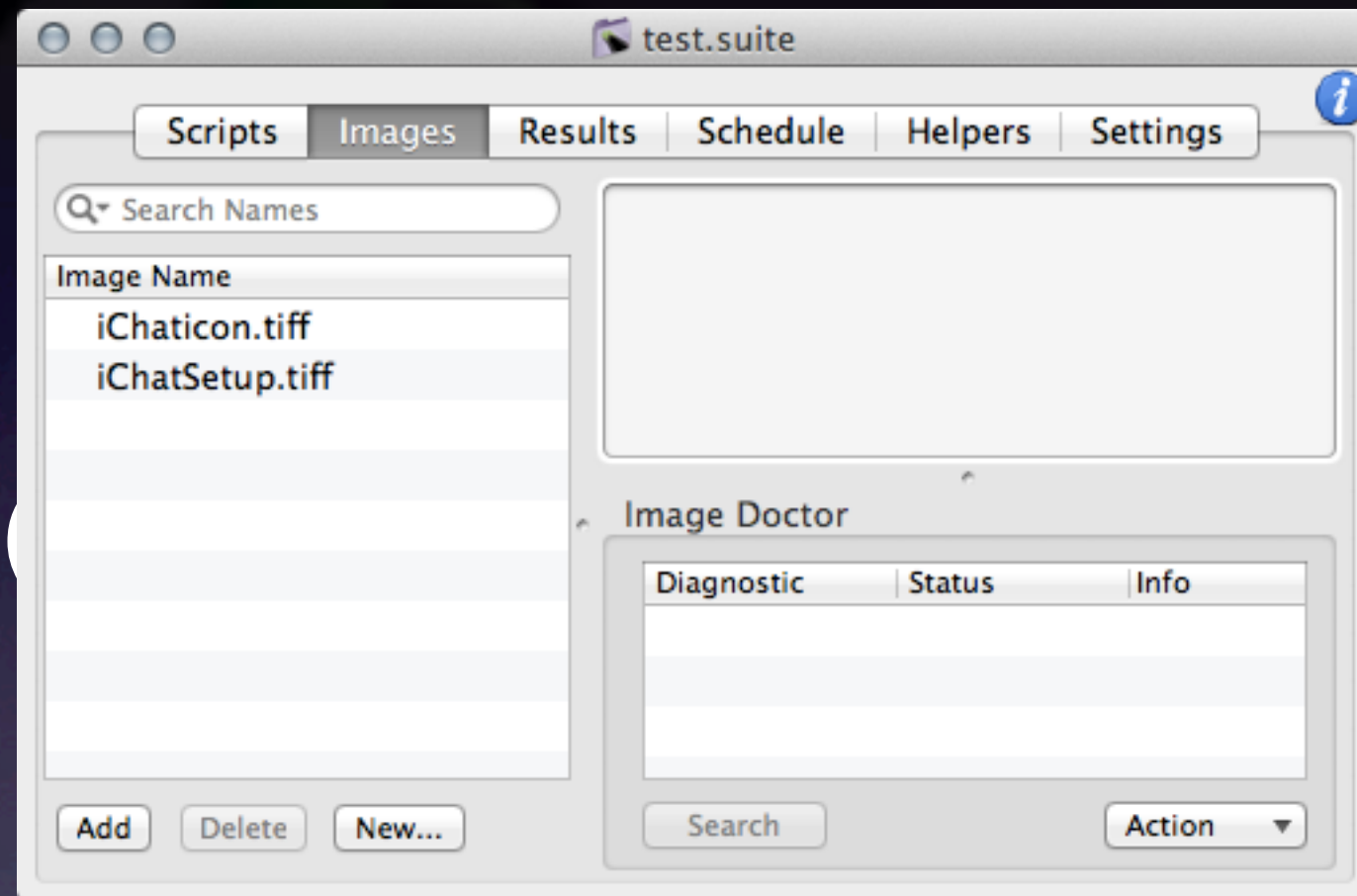
Scripts Images Results Schedule Helpers Settings

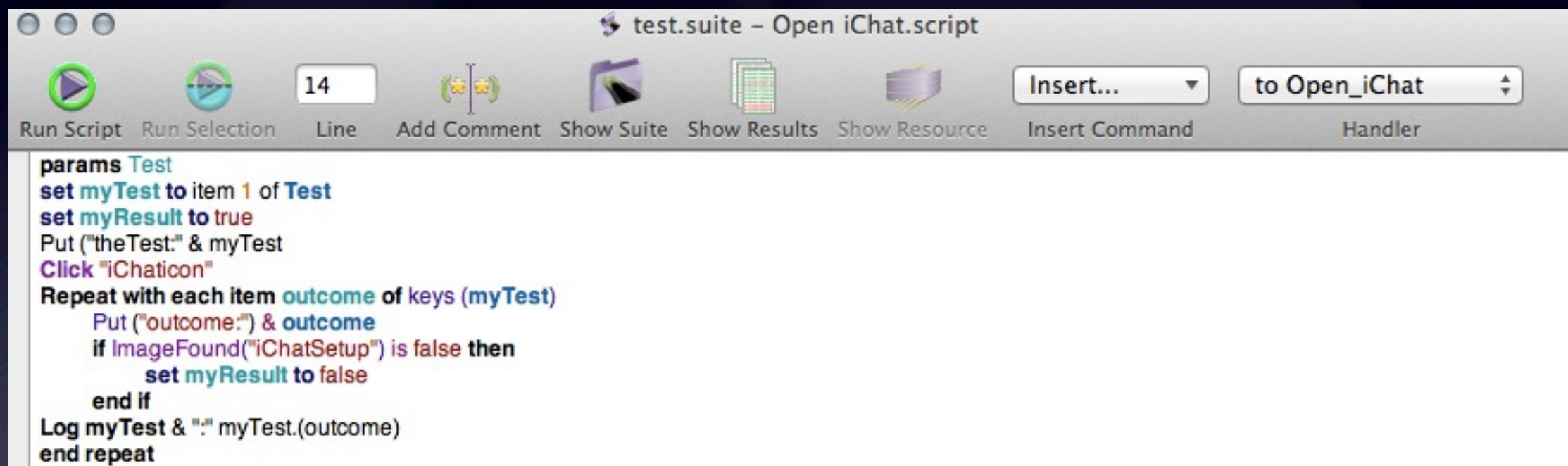
Search Scripts

Script Name	Modified Date	Last Run	Size
Open iChat.script	10/12/12 11:19:07 AM	10/12/12	301
Open Word.script	10/14/12 9:34:57 PM		0
Play Warcraft.script	10/14/12 9:35:05 PM		0
Play Minecraft.script	10/14/12 9:35:13 PM		0
Play Angry Birds.script	10/14/12 9:35:27 PM		0
stroke 127.0.0.1.script	10/14/12 9:35:40 PM		0

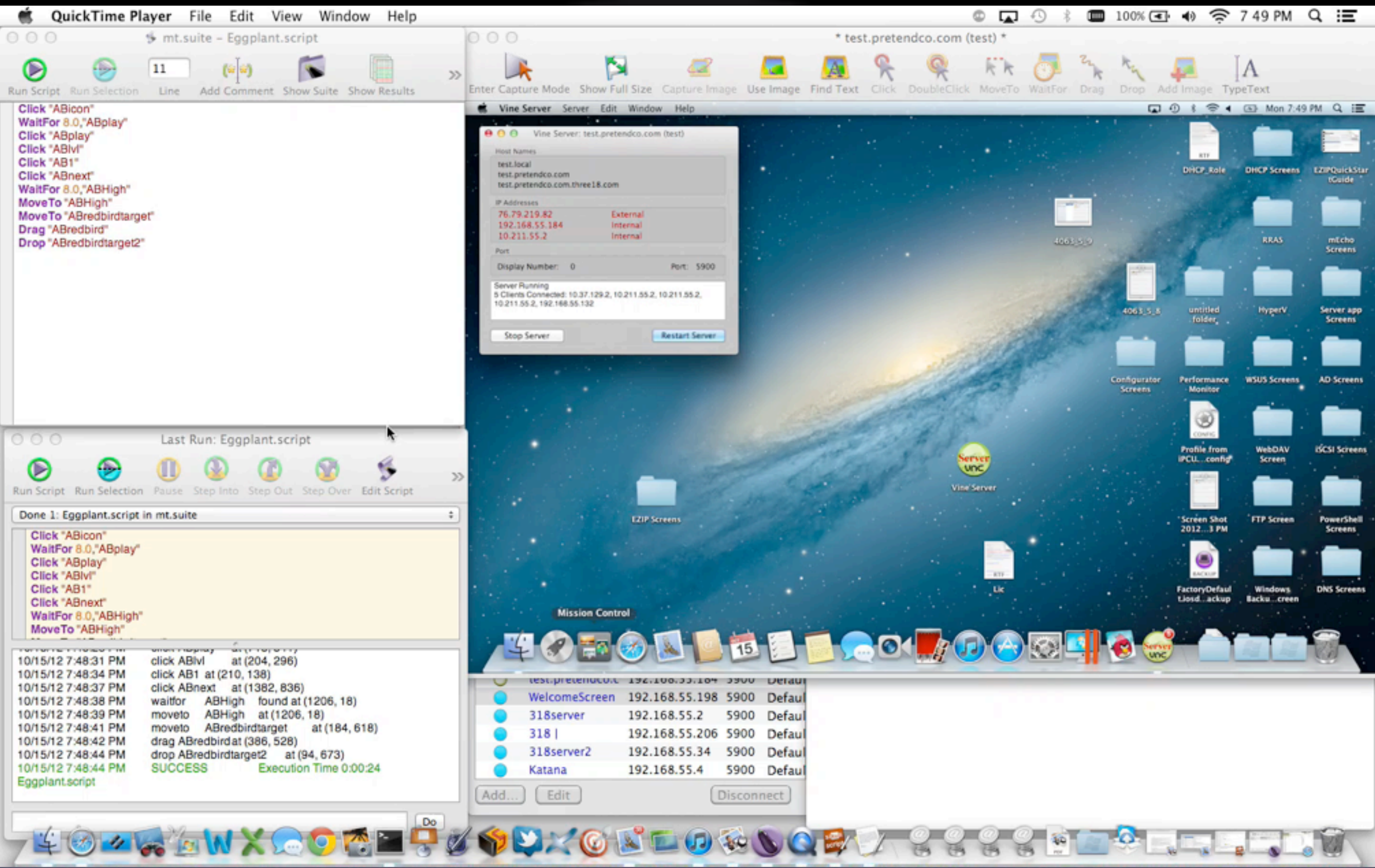
New... Delete Run Open

”









[http://
www.testplant.com/
support/tutorials/](http://www.testplant.com/support/tutorials/)



iOS



Simulator



Jailbreak



Problems

STAND BACK



**I'M GOING TO TRY
SCIENCE**

Jailbreaking & MDM



Gamers With Botnets





