

Deploy Studio - Use it and Save Hours Per Day!



Laurence Koret
Operations Engineer
4/19/2012

lkoret@pivotallabs.com
[@starlightmedia](#)

Who is Pivotal Labs?

We provide Ruby on
Rails web development
and wrote
Pivotal Tracker which is
used by many agile
developers.

Build better software, faster.

Collaborative, lightweight agile project management tool, brought to you by the experts in agile software development.

[SIGN UP NOW](#)[VIEW FEATURES](#)

Increase Visibility and Collaboration

Bring everyone, even distributed teams into the same virtual room. Enable a more efficient way to agree on priorities and stay aligned with the entire team.

Plan Based on Realistic Estimates

Stay on target with Tracker's continuous, automatic prediction of milestone completion dates, based on your team's performance.

Deliver on Customer Feedback

Get the right product to the market sooner, based on continuous feedback and prioritization. Respond to changing needs and new requirements easily.

Transform How You Build Software

Supercharge your agile project teams with focused, real time collaboration. Accelerate agile adoption with a simple, proven process.

Now available! Tracker for iOS!



DeployStudio Admin connected to park.nyc.pivotallabs.com

Search

ACTIVITY

COMPUTERS

24" Silver iMacs

27" Silver iMacs

Group 5

Mac Minis

Mid-2010 Mac Minis

White iMacs

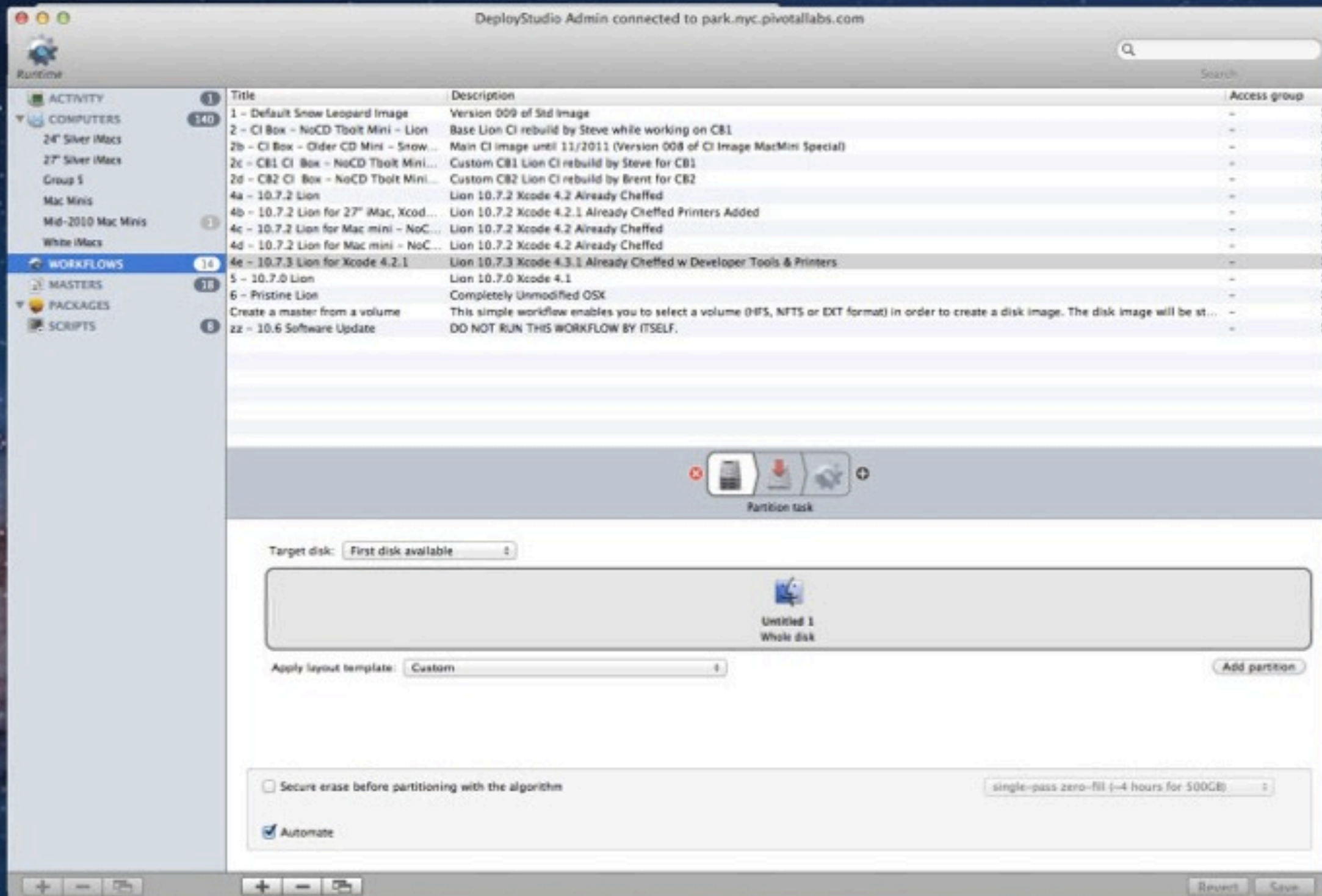
WORKFLOWS

MASTERS

PACKAGES

SCRIPTS

| File name | Creation date | File Size | Keywords | Access group |
|---------------------------------------|------------------|-----------|----------------------------|--------------|
| 3c075434839a_NewlyImaged_12.01.12 | 1/12/12 11:53 AM | 15.2 GB | 11C74 10.7.2 Mac OS X i386 | - |
| 3c0754583a25_NewlyImaged_12.01.13 | 1/13/12 6:00 PM | 7.8 GB | 11C74 10.7.2 Mac OS X i386 | - |
| CB1-custom-CI_NoCD-tboot-mini_011- | 11/9/11 2:03 PM | 11.8 GB | 11C74 10.7.2 Mac OS X i386 | - |
| CB2MacMiniCI.i386.hfs.dmg | 1/12/12 12:07 PM | 11.2 GB | CB2 10.7 CI | - |
| ci-base_thunderbolt-mini_10.7.2_2011 | 11/7/11 12:30 PM | 11.4 GB | 11C74 10.7.2 Mac OS X i386 | - |
| ci-base_thunderbolt-mini_10.7.2_2011 | 11/30/11 1:22 PM | 11.4 GB | 11C74 10.7.2 Mac OS X i386 | - |
| ci-version-008_SL_10.6.4_10.10.13_11 | 10/13/10 2:31 PM | 8.2 GB | - | - |
| ci-box-newmini-snowleopard-revReed0 | 2/15/11 10:02 PM | 7.7 GB | - | - |
| dev-version008_SL_10.6.5_11.01.04_1 | 1/4/11 6:57 PM | 16.9 GB | - | - |
| dev009-prelim-newimac.i386.hfs.dmg | 5/9/11 7:28 PM | 17.9 GB | - | - |
| essex_essex_12.04.16_15.56.i386.hfs.i | 4/16/12 10:55 AM | 10.0 GB | 11D50 10.7.3 Mac OS X i386 | - |
| lion_11-11-29_14-10.i386.hfs.dmg | 11/29/11 5:12 PM | 11.5 GB | - | - |
| lion_2012-03-22_19-09.i386.hfs.dmg | 3/22/12 10:10 PM | 9.7 GB | - | - |
| Lion_xcode.hfs.dmg | 7/21/11 5:58 PM | 7.1 GB | - | - |
| New_Mini_Pristine_Machine_10.08.19_C | 8/19/10 11:05 AM | 4.2 GB | - | - |
| NewlyImaged_12.01.12_18.25_xcode4i | 1/12/12 12:45 PM | 9.5 GB | 11C74 10.7.2 Mac OS X i386 | - |
| NoCD-mini-general-lion-ci-rev2.i386 | 11/10/11 3:10 PM | 11.4 GB | 11C74 10.7.2 Mac OS X i386 | - |
| walimini-875howard-tboot-11122011 | 12/29/11 7:44 PM | 7.6 GB | - | - |



DeployStudio Admin connected to park.nyc.pivotallabs.com

Runtime

Search

ACTIVITY

COMPUTERS 340

24" Silver iMacs

27" Silver iMacs

Group 5

Mac Minis

Mid-2010 Mac Minis

White iMacs

WORKFLOWS 14

MASTERS 18

PACKAGES

SCRIPTS

| Title | Description | Access group |
|--|---|--------------|
| 1 - Default Snow Leopard Image | Version 009 of Std Image | - |
| 2 - CI Box - NoCD Tbolt Mini - Lion | Base Lion CI rebuild by Steve while working on CB1 | - |
| 2b - CI Box - Older CD Mini - Snow... | Main CI image until 11/2011 (Version 008 of CI Image MacMini Special) | - |
| 2c - CB1 CI Box - NoCD Tbolt Mini... | Custom CB1 Lion CI rebuild by Steve for CB1 | - |
| 2d - CB2 CI Box - NoCD Tbolt Mini... | Custom CB2 Lion CI rebuild by Brent for CB2 | - |
| 4a - 10.7.2 Lion | Lion 10.7.2 Xcode 4.2 Already Cheffed | - |
| 4b - 10.7.2 Lion for 27" iMac, Xcod... | Lion 10.7.2 Xcode 4.2.1 Already Cheffed Printers Added | - |
| 4c - 10.7.2 Lion for Mac mini - NoC... | Lion 10.7.2 Xcode 4.2 Already Cheffed | - |
| 4d - 10.7.2 Lion for Mac mini - NoC... | Lion 10.7.2 Xcode 4.2 Already Cheffed | - |
| 4e - 10.7.3 Lion for Xcode 4.2.1 | Lion 10.7.3 Xcode 4.3.1 Already Cheffed w Developer Tools & Printers | - |
| 5 - 10.7.0 Lion | Lion 10.7.0 Xcode 4.1 | - |
| 6 - Pristine Lion | Completely Unmodified OSX | - |
| Create a master from a volume | This simple workflow enables you to select a volume (HFS, NTFS or EXT format) in order to create a disk image. The disk image will be st... | - |
| zz - 10.6 Software Update | DO NOT RUN THIS WORKFLOW BY ITSELF. | - |

Restore task

Target volume: First disk available

Image: HFS essex_essex_12.04.16_15.56.1386.hfs.dmg

HFS only options:

Rename volume to: NewlyImaged

☒ Don't check restoration (faster)

☒ Erase target for block copy restoration (faster)

☒ Rename ByHost prefs

☒ Cleanup machine dependent files and caches

☒ Restore system recovery partitions

☐ Enable multicast restoration

☐ Pause workflow until multicast ends

Stream data rate: 8 MB/s

Startup trigger: 0 clients

Client disk speed: 63 MB/s

Timeout: 0 minutes

☐ Expand restored NTFS volume

☒ Set as default startup volume

☒ Automate

Revert Save



DeployStudio Admin connected to park.nyc.pivotallabs.com

Runtime

ACTIVITY

COMPUTERS 140

24" Silver iMacs

27" Silver iMacs

Group 5

Mac Minis

Mid-2010 Mac Minis

White iMacs

WORKFLOWS 14

MASTERS 18

PACKAGES

SCRIPTS 6

File name

ds_create_RAID.sh

ds_example.sh

ds_fix_byllhost_prefs.sh

ds_mac_serial_number.sh

ds_partition.sh

ds_workflow_selector.sh

pivotal.set.software.update.variable.os.sh

serverserialize.10.6.sh

```
#!/bin/sh

SCRIPT_NAME=$(basename "$0")

echo "${SCRIPT_NAME} - v2.0 ("date")"

BOOT_DEVICE=$(diskutil info / | grep "Device Node:" | sed s/Device\ Node:\/g | sed s/\ *//)
if [ "${BOOT_DEVICE}" = "" ]
then
    echo "RuntimeAbortWorkflow: cannot get boot device"
    echo "${SCRIPT_NAME} - end"
    exit 1
fi

SLICE_INDEX=$(expr ${#BOOT_DEVICE} - 1)
while [ ${SLICE_INDEX} -ge 10 ];
do
    if [ "${BOOT_DEVICE:${SLICE_INDEX}:1}" = "s" ]
    then
        BOOT_DEVICE=${BOOT_DEVICE:0:${SLICE_INDEX}}
        break
    fi
    SLICE_INDEX=$(expr ${SLICE_INDEX} - 1)
done
echo "Boot device: ${BOOT_DEVICE}"

DTCK NR=0
```

Revert Save

Q & A