

Mobile Device Management 101

Charles Edge



The background of the slide features two iPads. The iPad on the left displays the original iOS interface with a grid of app icons and a dock at the bottom. The iPad on the right displays a more modern version of the interface with a large, high-resolution image as the background and a different arrangement of icons. The title 'The Evolution' is centered over the iPads in a white serif font.

The Evolution



In the Beginning...

The image features two iPads positioned side-by-side against a dark, textured background. The iPad on the left displays the classic iOS home screen with a mountain wallpaper, a dock at the bottom, and several app icons. The iPad on the right shows a web browser with a red header bar and a large image of a classical painting. The text 'In the Beginning...' is centered over the iPads in a white, serif font.





Where Everyone Starts

A large, faint, circular logo with a musical note inside, centered in the background.

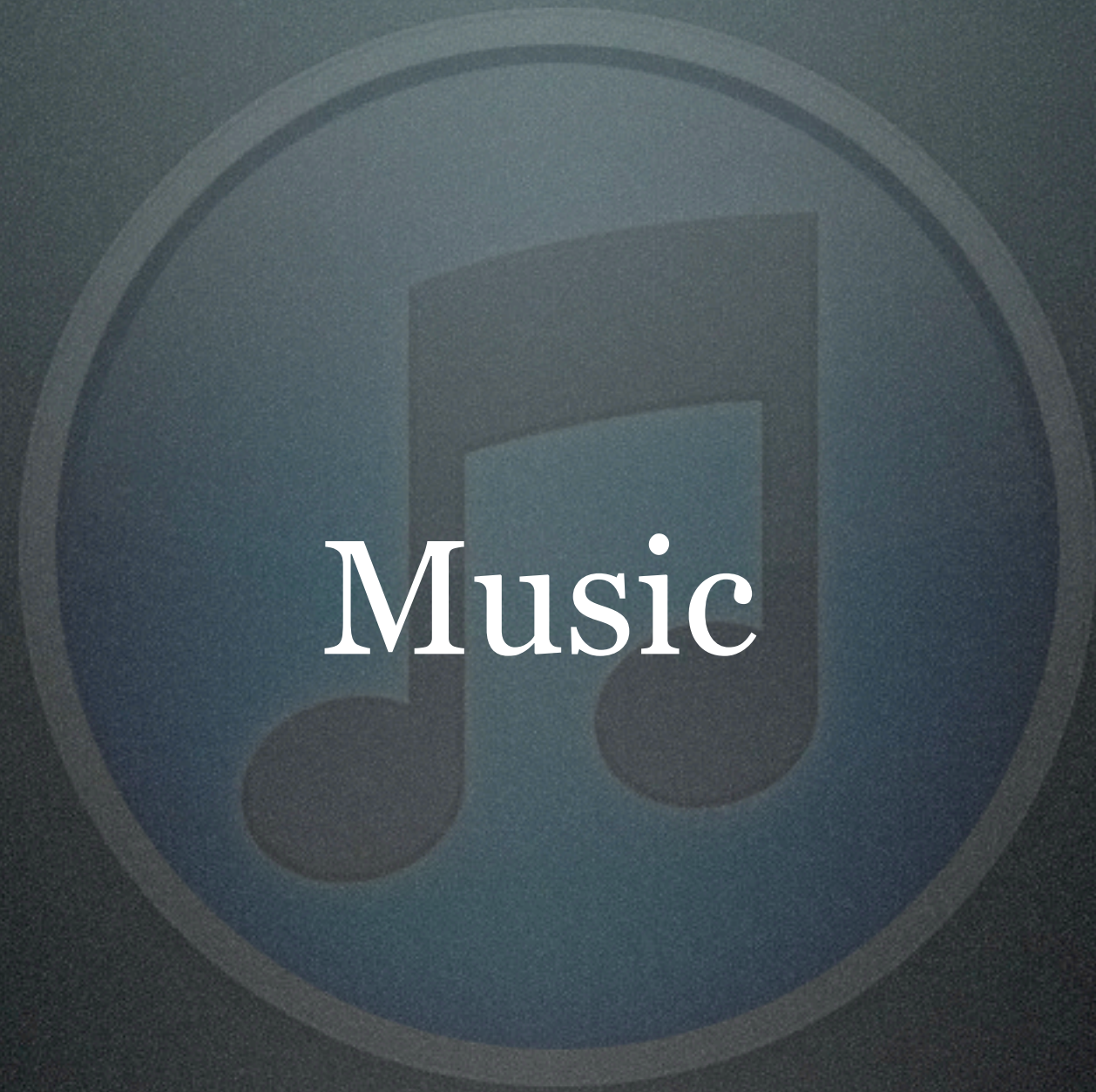
Backup/Restore

A large, faint, circular logo is centered in the background. It features a stylized musical note, similar to the Apple logo, rendered in a light blue or grey color. The logo is semi-transparent, allowing the dark background to show through.

App Deployment



Content Synchronization



Music



Video



App Data

A large, faint, circular iTunes logo is centered in the background. It features a blue circle with a white musical note inside. The text "iTunes Challenges" is overlaid on this logo.

iTunes Challenges



Settings Aren't Customized Per User



Not All Settings Copy (Encryption ?)

A large, faint, blue-tinted Apple logo is centered in the background. Inside the logo, a musical note is visible, suggesting a connection to music or audio.

Apps are Unlicensed

A large, faint, circular logo with a musical note inside, centered in the background.

One device at a time



USB




The background features a dark, textured gradient. Overlaid on this are two faint, semi-transparent icons. On the left is a sunburst or starburst shape, and on the right is a rounded rectangular shape resembling a document or a tablet. The text is centered over these elements.

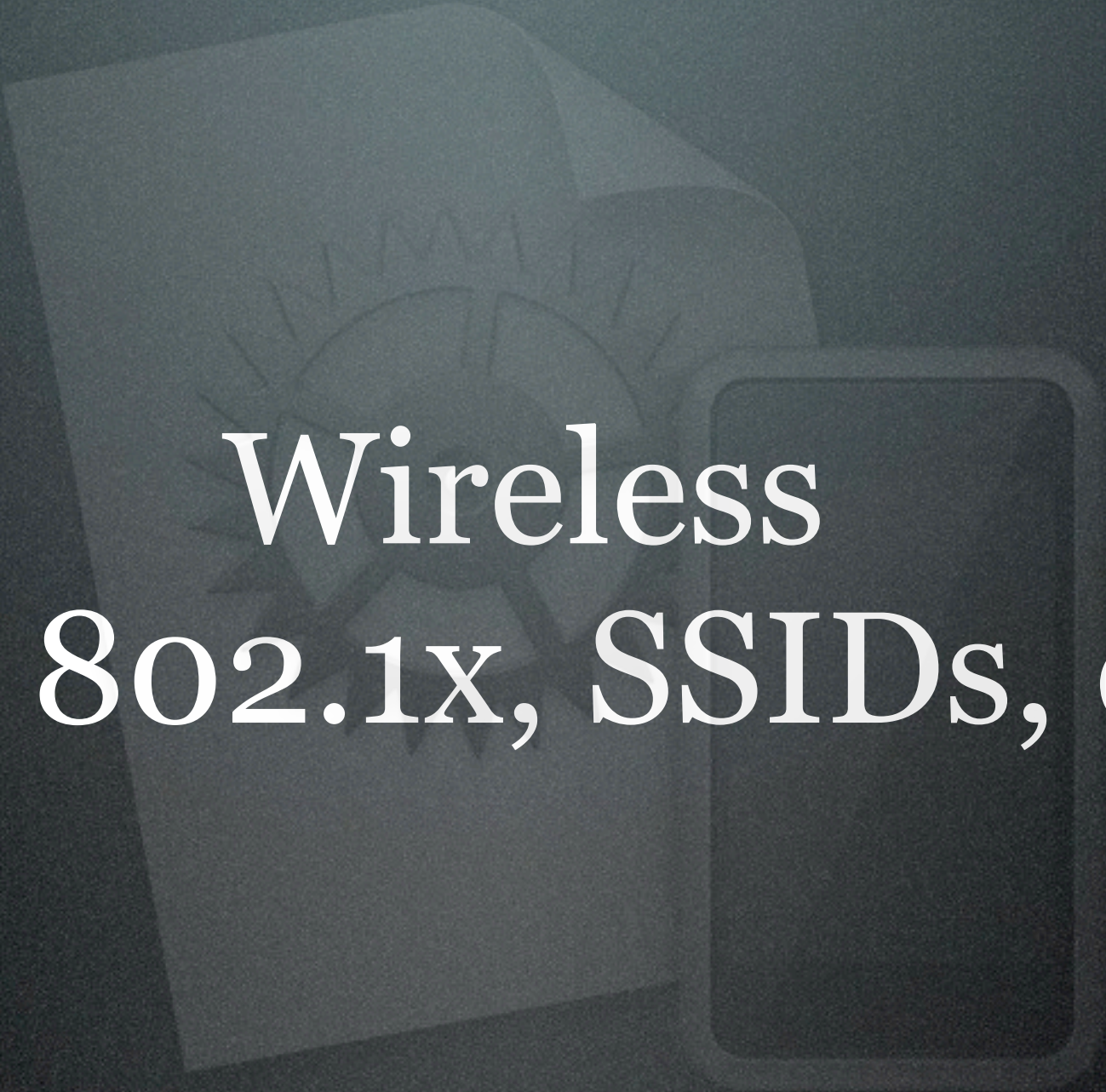
Property Lists (Similar to MCX)



Automatic Configuration of Mail/ActiveSync

A faint, semi-transparent background graphic featuring a large gear with a sunburst pattern in the center, and a smartphone-like shape to its right.

Disable Features (e.g. YouTube, App Store)



Wireless

(e.g. 802.1x, SSIDs, etc)



Configure VPN Clients

A faint, semi-transparent background image showing a certificate with a sunburst emblem and a smartphone.

Distribute Certificates



Manage Passcode Settings




Property Lists

A faint, light-gray illustration serves as a background. It depicts a notepad with a sun-like drawing on its page, and a smartphone is positioned next to it. The entire scene is set against a dark, textured gradient background.

.mobileconfig

A faint, light-gray illustration in the background. On the left is a document with a folded top-right corner, featuring a sunburst or gear-like emblem. To its right is a smartphone with a dark screen and a visible home button.

Provisioning Profiles

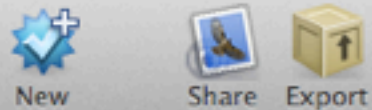


Installed over USB, from
web pages or email/SMS



Created with iPhone Configuration Utility

iPhone Configuration Utility



LIBRARY

- Devices
- Applications
- Provisioning Profiles
- Configuration Profiles

Name	Identifier	Created
ipcu_none	com.pretendco.com	3/12/12 2:45 PM
Profile Name	[identifier not specified]	3/26/12 11:40 AM
S/MIME Certificate	com.pretendco.smime	2/27/12 5:47 PM

- General**
Mandatory
- Passcode**
Not Configured
- Restrictions**
1 Payload Configured
- Wi-Fi**
Not Configured
- VPN**
1 Payload Configured
- Email**
Not Configured
- Exchange ActiveSync**
Not Configured
- LDAP**
Not Configured

VPN

Connection Name

Display name of the connection (displayed on the device)

Connection Type

The type of connection enabled by this policy

Server

Hostname or IP address for server

Account

User account for authenticating the connection

User Authentication



iPhone Configuration Utility Challenges



Changes Require Removing and Re-adding



Username and Passwords

A faint, light-colored illustration serves as a background. It depicts a notepad with a sun-like drawing on its cover, featuring a spiral center and radiating lines. Next to the notepad is a smartphone with a blank screen. The entire scene is set against a dark, textured background.

Apps?



USB



Profile Manager

The background features a dark, textured surface. In the center, there is a faint, semi-transparent graphic. It consists of a document-like shape on the left with a sun icon on it, and a smartphone-like shape on the right. The text is overlaid on this graphic.

Mobile Device Management (OTA)

The background features two faint, semi-transparent icons. On the left is a document icon with a folded top-right corner, containing a sunburst or starburst graphic. To its right is a tablet or smartphone icon, shown in a vertical orientation. Both icons are rendered in a light gray tone against a dark, textured background.

Web Portal

The background features a faint, semi-transparent image. On the left is a document with a sunburst logo in the center. To the right of the document is a smartphone. The text 'Enroll a Device' is centered over these elements.

Enroll a Device

A faint, light-colored graphic in the background. It consists of a document-like shape on the left with a sunburst or starburst pattern in the center, and a rounded rectangular shape on the right that resembles a tablet or a piece of paper.

Change Via APNS

A faint, light-gray illustration in the background. It features a document with a folded top-right corner, a sunburst or starburst graphic on its surface, and a smartphone positioned to the right of the document.

Wipe/Lock Devices

The background features a dark, textured gradient. Overlaid on this are two faint, semi-transparent icons: a document with a sunburst or starburst design on its left side, and a smartphone icon to its right.

Push Internally Developed Apps



No USB Required!



No content or App Store Apps

Profile Manager: User Group: Everyone

https://mdm.pretendco.com/profilemanager/#/user_group/ Google

Profile Manager Search Administrator

LIBRARY

- Devices
- Device Groups
- Users
- Groups**

ACTIVITY

- Active Tasks
- Completed Tasks

Everyone
All Users

Workgroup
26 Members

Demo
25 Members

Everyone
All Users

Profile Members Activity About Apps

Settings for Everyone

General VPN

Download Edit

+ - ↻ ⚙ Revert Save...

Volume Purchasing Program

But Codes Are Redeemed
by Apple IDs



The background features a large, faint circular frame. Inside this frame is a stack of several tablets or smartphones, with the top one clearly visible. The entire image has a dark, textured background.

Deploy Profiles (Prepare)



Deploy and Revoke Apps (Supervise)



Free Apps



VPP For Paid Apps

The background features a large, faint circular frame. Inside this frame is a stack of several tablets or smartphones, with the top one clearly visible. The entire image has a dark, textured background.

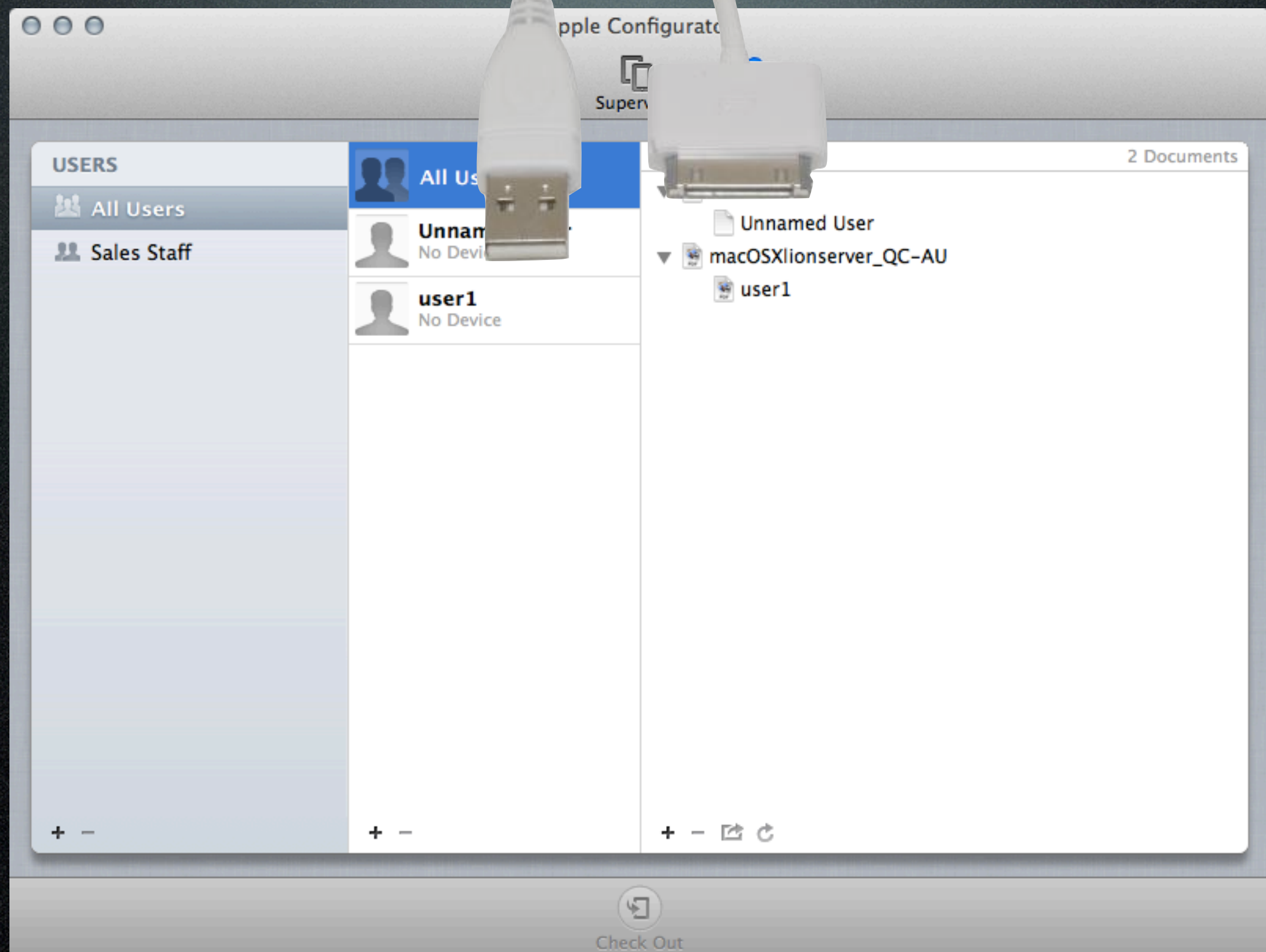
Profiles Can Enroll Devices

The background features a large, faint, circular graphic. Inside the circle is a stylized illustration of a tablet computer with a stack of books underneath it. The text "Deploy Content (Assign)" is overlaid in the center in a white serif font.

Deploy Content (Assign)



USB



- 
- App Handling
 - Apple IDs vs Supervision
 - Updates
 - Content per App
 - USB
- # Apple Configurator Challenges



- Apple Configurator

- Trust Profile
- Enrollment Profile
- Name/
Background
- Apps
- Webclips

- Profile Manager

- 802.1x Certificate
- Wireless SSID
- Passcode Policy
- Configure
ActiveSync
- VPN Client
- Show Users wipe

A Compelling Story

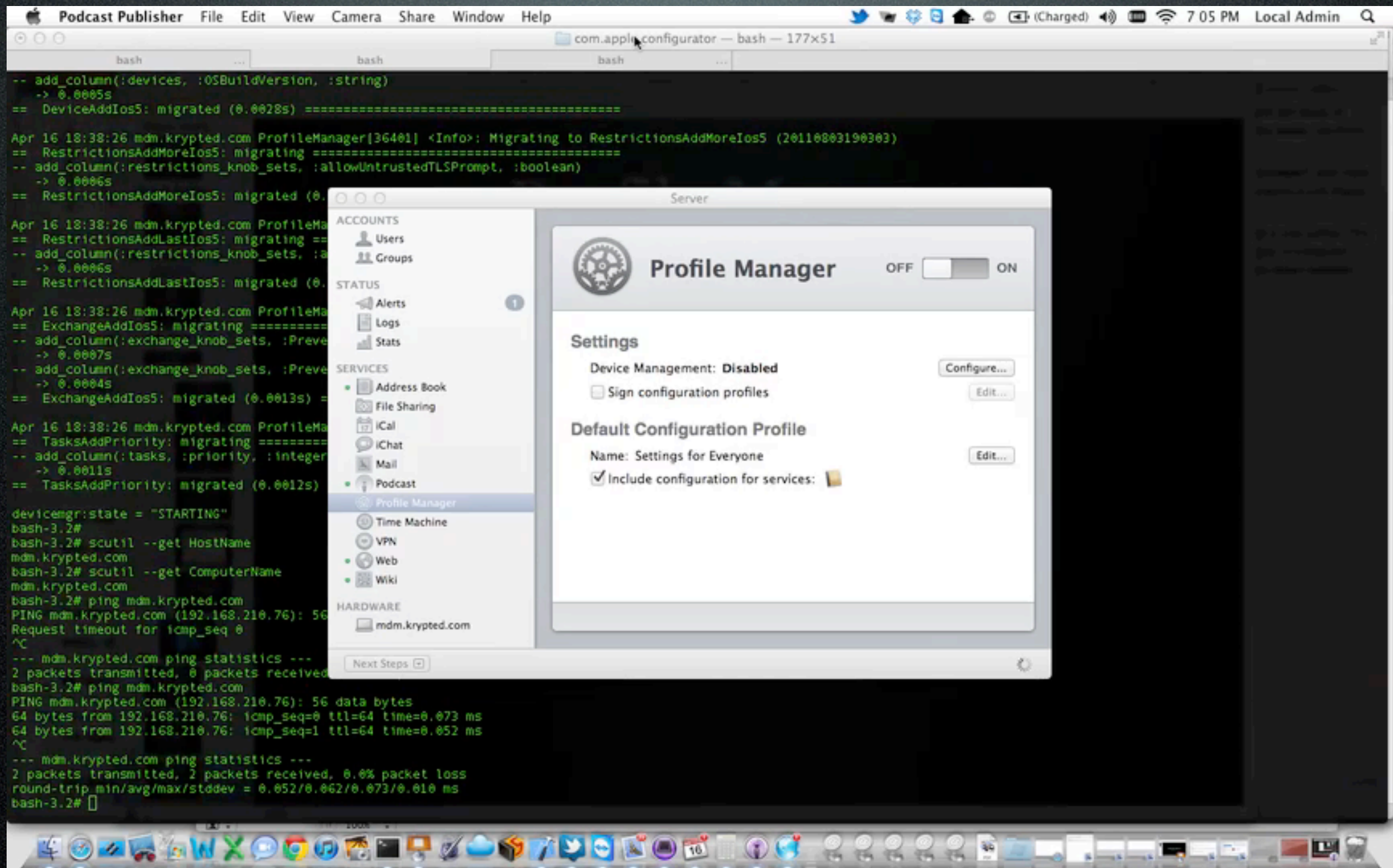
- Enrich
- What
- Rem



Configurator + Profile Manager

- Apple Configurator - \$0
- Lion Server - \$50
- Over the Air Policy Updates
- Application Management
- Wipe and Lock Enrolled Devices

Installing Profile Manager



The image features two iPads positioned side-by-side against a dark, textured background. The iPad on the left displays the iOS home screen with a grid of app icons and a mountain landscape wallpaper. The iPad on the right shows a web browser with a red header bar and a large image of a person. Overlaid in the center of the image is the text 'Q&A' in a large, white, serif font.

Q&A