

# Web Services

**MIGUEL CHAVEZ**  
**C & C COMPUTER FACTORY**  
**MIGUEL@C3FACTORY.COM**



# WEB SERVICES

- WEB
- WEB MAIL
- ICAL
- PODCAST PRODUCER
- WIKI SERVER



# WHERE IS IT?

- SNOW LEOPARD

  - CONFIGURED IN SERVER ADMIN

- LION

  - CONFIGURED IN SERVER.APP

- MAY NEED TO DIG UNDER THE GUI FOR MORE CONTROL

# STARTING WEB SERVER







# server17.pretendco.com

/Library/Server/Web/Data/Sites/MyNewWebsite

Domain Name:

IP Address:  Port:

Store Site Files In:

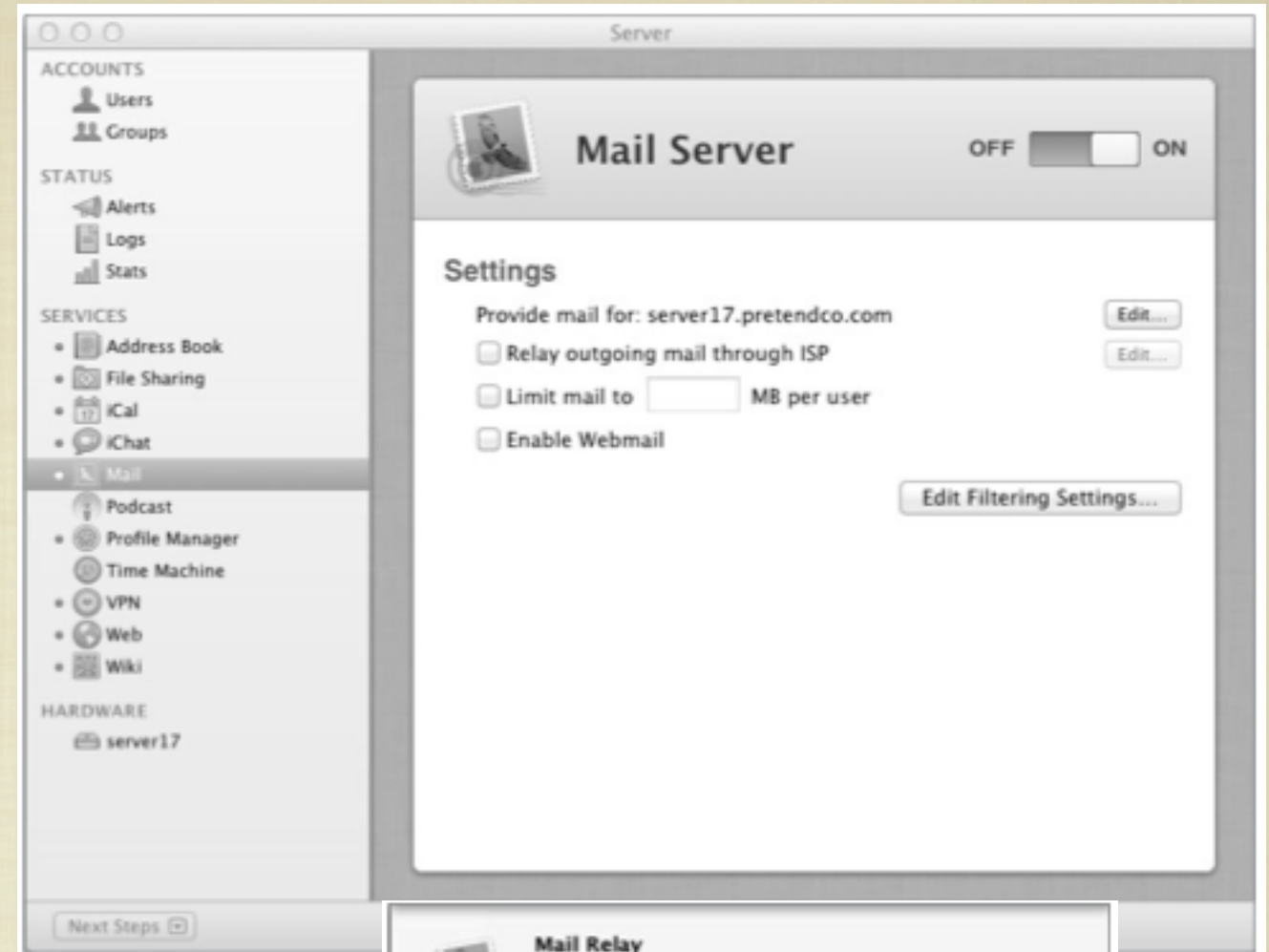
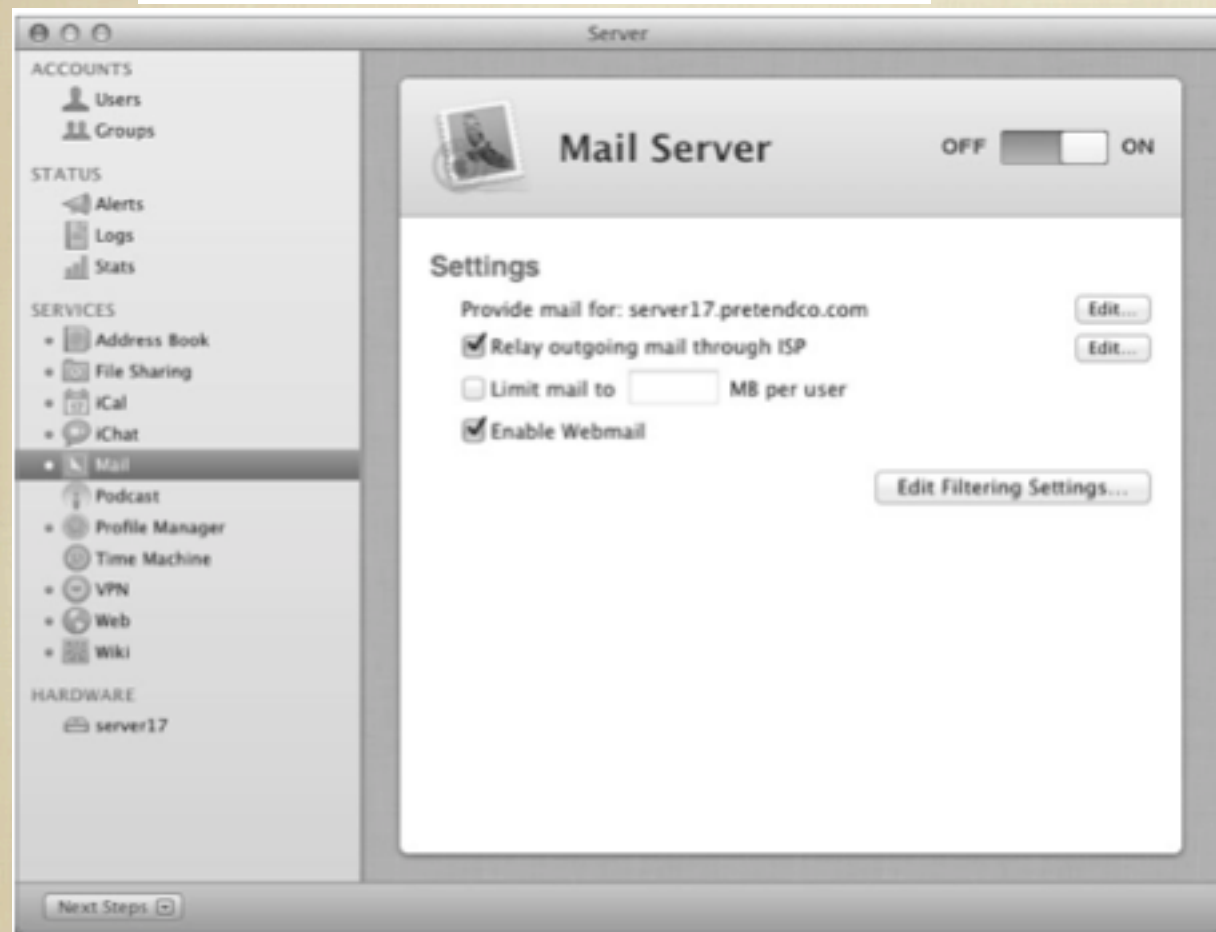
Who Can Access:

[View Document Root Contents](#)

Cancel

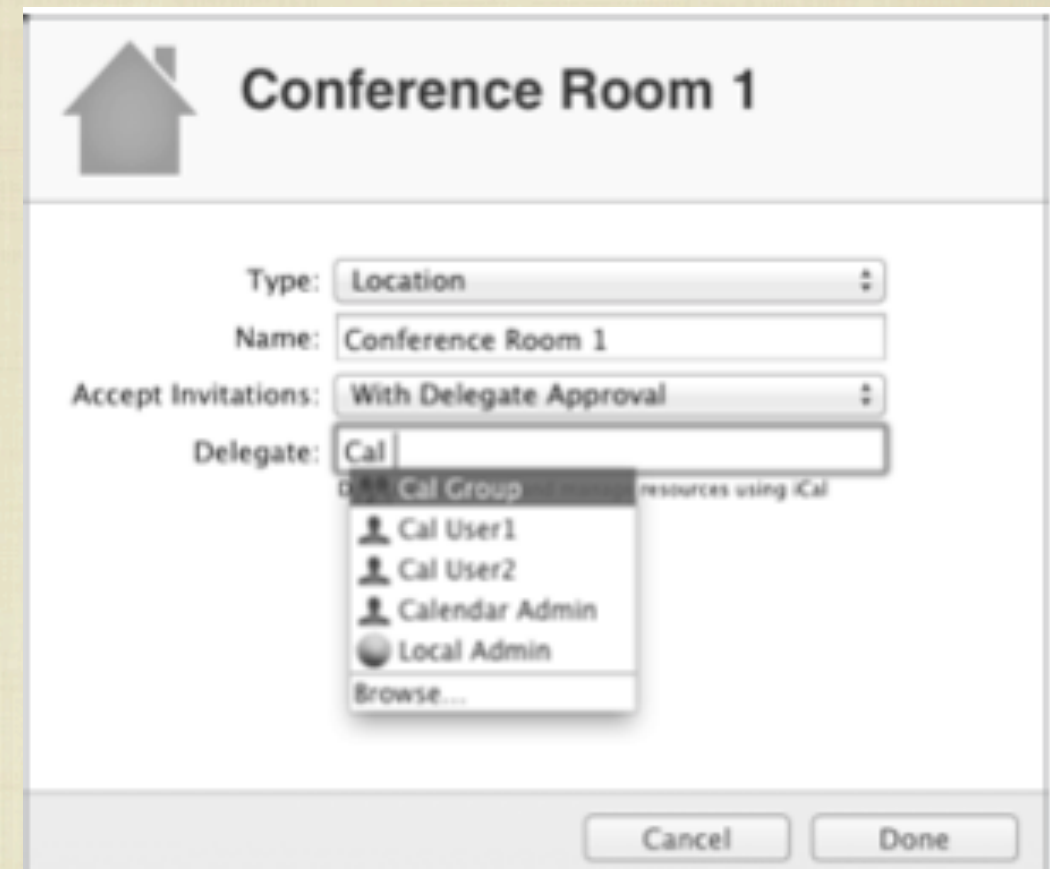
Done

# WEBMAIL SETUP



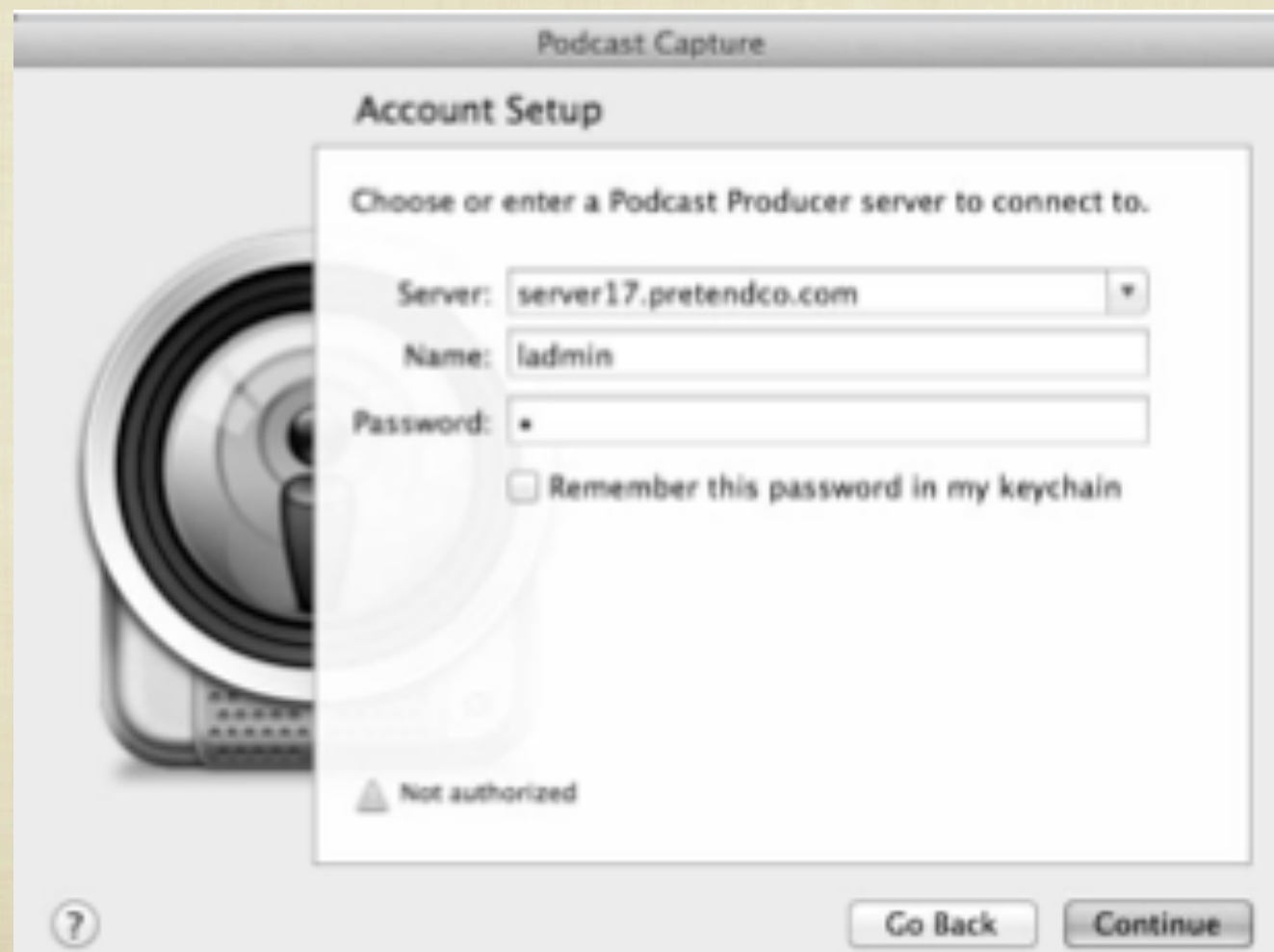


# ICAL SERVER



# PODCAST PRODUCER

(NOT ACTUALLY CALLED PRODUCER)  
PODCAST COMPOSER AND CAPTURE





# WIKI SERVER



# NITTY GRITTY

APACHE CONFIG FILES ARE LOCATED:  
**/ETC/APACHE2/**

APACHE MODULES—INCLUDING APPLE-SPECIFIC MODULES  
—ARE LOCATED IN  
**/USR/LIBEXEC/APACHE2/**

DEFAULT LOCATION FOR LION SERVER'S WEBPAGES IS  
LOCATED IN:  
**/LIBRARY/SERVER/WEB/DATA/SITES/**

IN SL IT IS HERE:  
**/LIBRARY/WEBSERVER/DOCUMENTS**

IN LION, WIKI DATA IS STORED:  
**/LIBRARY/SERVER/WIKI**

**PODCAST PRODUCER COMES WITH SERVER ADMIN TOOLS**